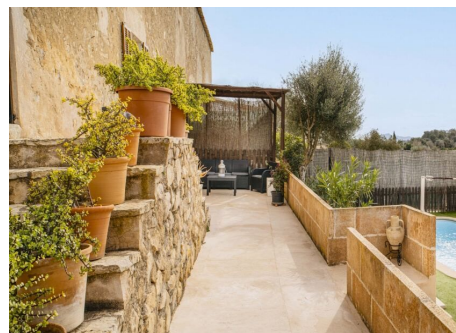


# Semi-detached country house with beautiful unobstructed views near Villafranca

REF. AR1485 | 2.500€

1/5



📍 Villafranca de Bonany 🏠 250 m<sup>2</sup>
📏 27.000 m<sup>2</sup>
🛏️ 3
 🚿 3

## BASIC INFORMATION

4 Rooms  
 Kitchen  
 Pantry  
 Living - dining room  
 3 Bedrooms  
 3 Of them double bedrooms  
 3 Bath

3 Bath  
 1 Of them en suite bathrooms  
 2 Number of floors  
 Terrace  
 Laundry  
 As new

## AMENITIES

Furnished  
 3 Air conditioning cold/warm  
 Heating: electric radiators  
 Oven  
 8x4 Swimming pool  
 Water well  
 Porch

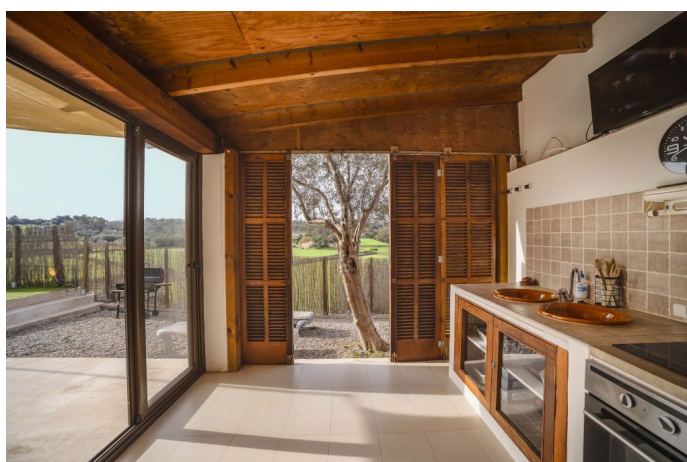
Porch  
 Wooden windows  
 Double glazing  
 Outdoor kitchen - BBQ  
 WiMAX internet

Energetic certification: D

Semi-detached country house with beautiful unobstructed views near Villafranca

REF. AR1485 | 2.500€

2/5



Semi-detached country house with beautiful unobstructed views near Villafranca

REF. AR1485 | 2.500€

3/5



Semi-detached country house with beautiful unobstructed views near Villafranca

REF. AR1485 | 2.500€

4/5



Semi-detached country house with beautiful unobstructed views near Villafranca

REF. AR1485 | 2.500€

5/5

