





In Santanyi Country house of about 400m2 divided into two houses, each one with an independent entrance, apart from a small apartment with kitchen and bathroom

REF. AR1129 | 2.500€

1/5



 Santanyi  400 m²  50.000 m²  5  4

BASIC INFORMATION

3 Living - dining - kitchen
2+2+1 Bedrooms
2+2+1 Of them double bedrooms
Dressing room
2+1+1 Bath
3 Of them en suite bathrooms

3 Of them en suite bathrooms
Guest apartment
Garden
Terrace
Well-kept

AMENITIES

Unfurnished
Oil heating
2 Fireplace
Swimming pool

Swimming pool

Energetic certification: En trámite / In process / In Bearbeitung

In Santanyi Country house of about 400m2 divided into two houses, each one with an independent entrance, apart from a small apartment with kitchen and bathroom

REF. AR1129 | 2.500€

2/5

The house is about 400m2 divided into two houses, each with a separate entrance, apart from a small apartment with kitchen and bathroom.

In the main house we have 2 bedrooms with dressing rooms and en-suite bathrooms and an open living-dining room-kitchen.

In the "second house" there are 2 bedrooms, 1 bathroom, open kitchen and living room with fireplace and dining room.

In the pool area there are several porches and from the pool you have views of the sea.



In Santanyi Country house of about 400m2 divided into two houses, each one with an independent entrance, apart from a small apartment with kitchen and bathroom

REF. AR1129 | 2.500€

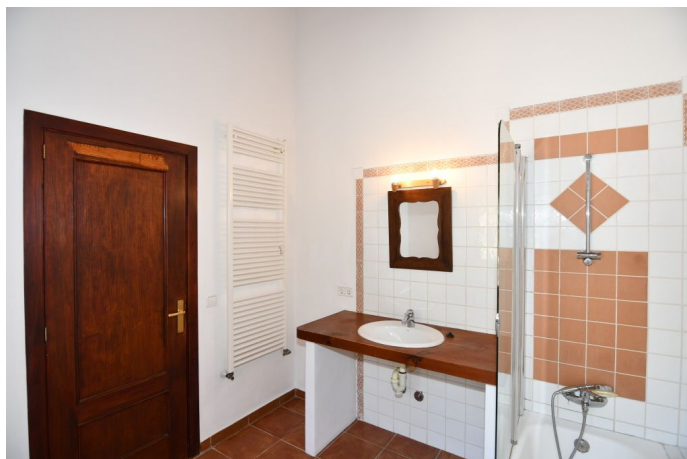
3/5



In Santanyi Country house of about 400m2 divided into two houses, each one with an independent entrance, apart from a small apartment with kitchen and bathroom

REF. AR1129 | 2.500€

4/5



In Santanyi Country house of about 400m2 divided into two houses, each one with an independent entrance, apart from a small apartment with kitchen and bathroom

REF. AR1129 | 2.500€

5/5

