

3-storey town house in Porreres built with the highest qualities

REF. P1165 | 749.000€

1/8



Porreres

368 m²

200 m²

3

2

BASIC INFORMATION		AMENITIES	
2008 Construction year	Dining room	Unfurnished	Double glazing
Entrance hall	3 Bedrooms	Air-conditioned	Cellar
6 Rooms	3 Of them double bedrooms	Air conditioning by aerothermal	Elevator
Living room	2 Bath	Oven	Atelier
Kitchen	1 Of them en suite bathrooms	Garage	Home automation control
Pantry	Patio	Aluminum windows	
Dining room	3 Number of floors	Double glazing	

Energetic certification: E

3-storey town house in Porreres built with the highest qualities

REF. P1165 | 749.000€

2/8

This fantastic house is distributed as follows:

Urban area, on a 200 m2 plot of land, bordering three streets, and with a 368 m2 building, on three floors, plus street level.

SEMI-GROUND PLANT

Room with vaulted ceiling, large fireplace (1.50), cellar, woodshed, and elevator machinery.

STREET LEVEL PLANT

Entrance into a small open garden, with access to the room.

Garage, one car, facilities cabinet, RAC, data, softener, and 200 l electric water heater.

FIRST LEVEL FLOOR

Entrance area, two bedrooms, a complete bathroom with a shower, plus a suite bedroom, with a bathroom, a shower and a hydromassage bathtub.

equipped and furnished kitchen, dining area, with double height, for access to the second level

SECOND LEVEL FLOOR

Diaphanous study, more exit to terrace and laundry.



3-storey town house in Porreres built with the highest qualities

REF. P1165 | 749.000€

3/8



3-storey town house in Porreres built with the highest qualities

REF. P1165 | 749.000€

4/8



3-storey town house in Porreres built with the highest qualities

REF. P1165 | 749.000€

5/8



3-storey town house in Porreres built with the highest qualities

REF. P1165 | 749.000€

6/8

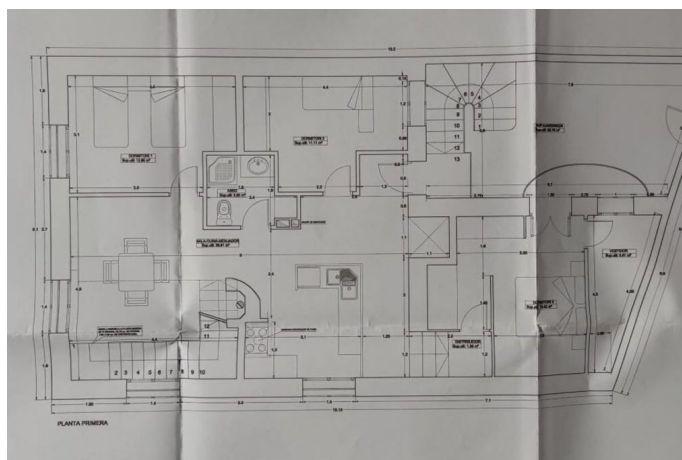
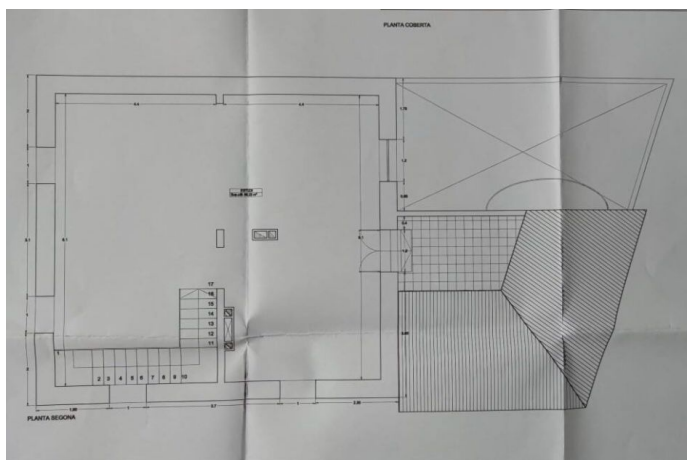
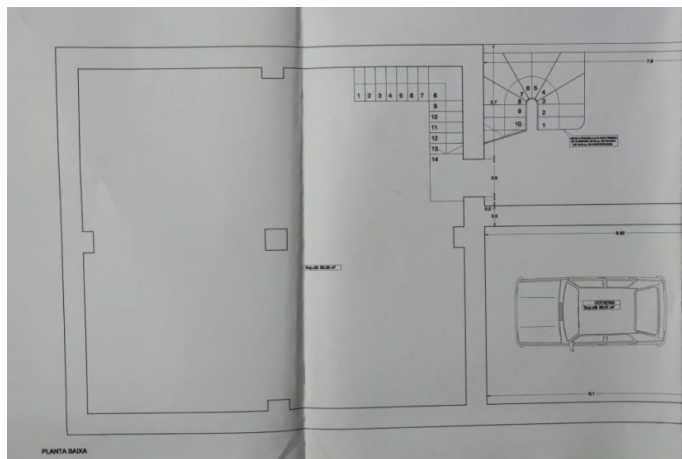
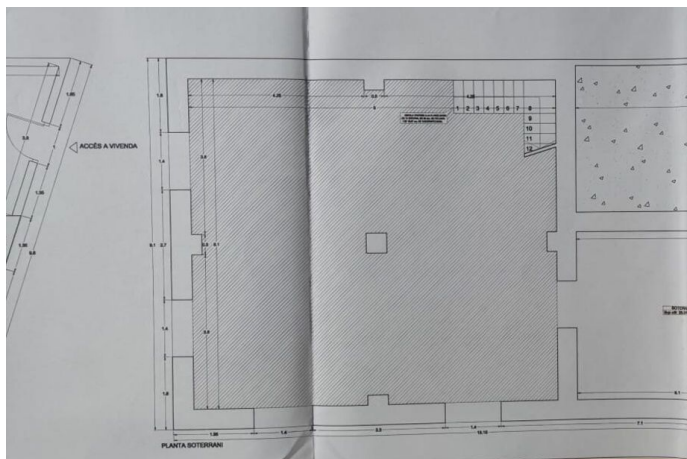
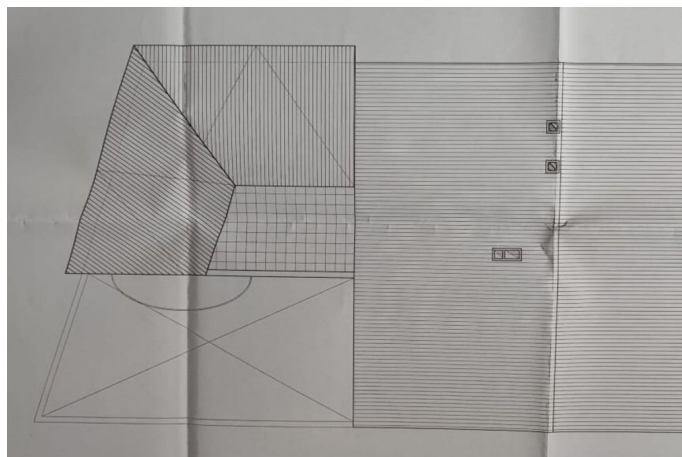


3-storey town house in Porreres built with the highest qualities

REF. P1165 | 749.000€

7/8

QUADRE DE SUPERFÍCIES	
SUP. CONSTRUÏDA DE SOTERRANI	31.95 m²
SUP. CONSTRUÏDA DE PLANTA BAIXA	122.95 m²
SUP. CONSTRUÏDA DE PLANTA PRIMERA	122.95 m²
SUP. CONSTRUÏDA DE PLANTA SEGONA	91.00 m²
SUPERFÍCIE CONSTRUÏDA TOTAL	368.85 m²
SUPERFÍCIES ÚTILS	
SUPERFÍCIE ÚTIL (m²)	
SALA-CUINA-MENJADOR	36.91
ASEO	3.90
DORMITORI 1	12.66
DORMITORI 2	11.11
DORMITORI 3	14.42
DISTRIBUIDOR	1.38
VESTIDOR	5.81
ESTUDI	66.23
SUPERFÍCIE ÚTIL TOTAL	152.41



3-storey town house in Porreres built with the highest qualities

REF. P1165 | 749.000€

8/8

