

Typical Mallorcan semi-detached country house on an elevated plot with beautiful views of Manacor and the Mountains

REF. R1333 | 950.000€

1/4



Manacor



986 m²



62.128 m²



3



BASIC INFORMATION

1920 Construction year
Entrance hall
8 Rooms
Kitchen
3 Bedrooms
Pool possibility
In need of renovation

In need of renovation

AMENITIES

Electricity
Water well

Water well

Energetic certification: G

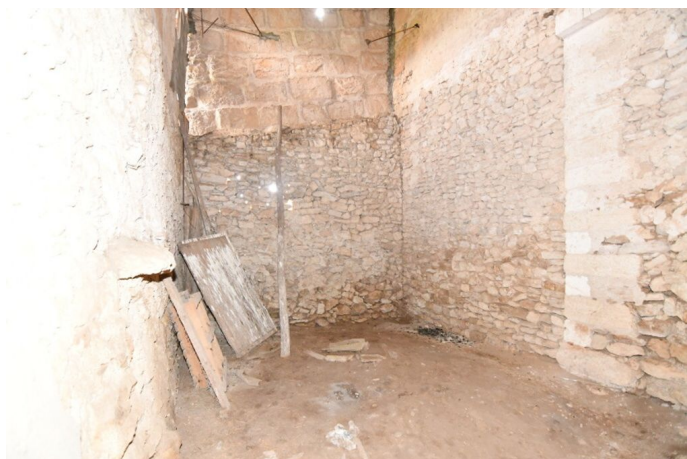
Typical Mallorcan semi-detached country house on an elevated plot with beautiful views of Manacor and the Mountains

REF. R1333 | 950.000€

2/4

Typical Mallorcan semi-detached rural house with many possibilities to reform, it has a total of 986m2 built divided into several buildings including the main house, all on 3 plots that add up to a total of 62,128m2

It has the possibility of building another house for single-family use on one of its plots (15,671m2).



Typical Mallorcan semi-detached country house on an elevated plot with beautiful views of Manacor and the Mountains

REF. R1333 | 950.000€

3/4



Typical Mallorcan semi-detached country house on an elevated plot with beautiful views of Manacor and the Mountains

REF. R1333 | 950.000€

4/4

