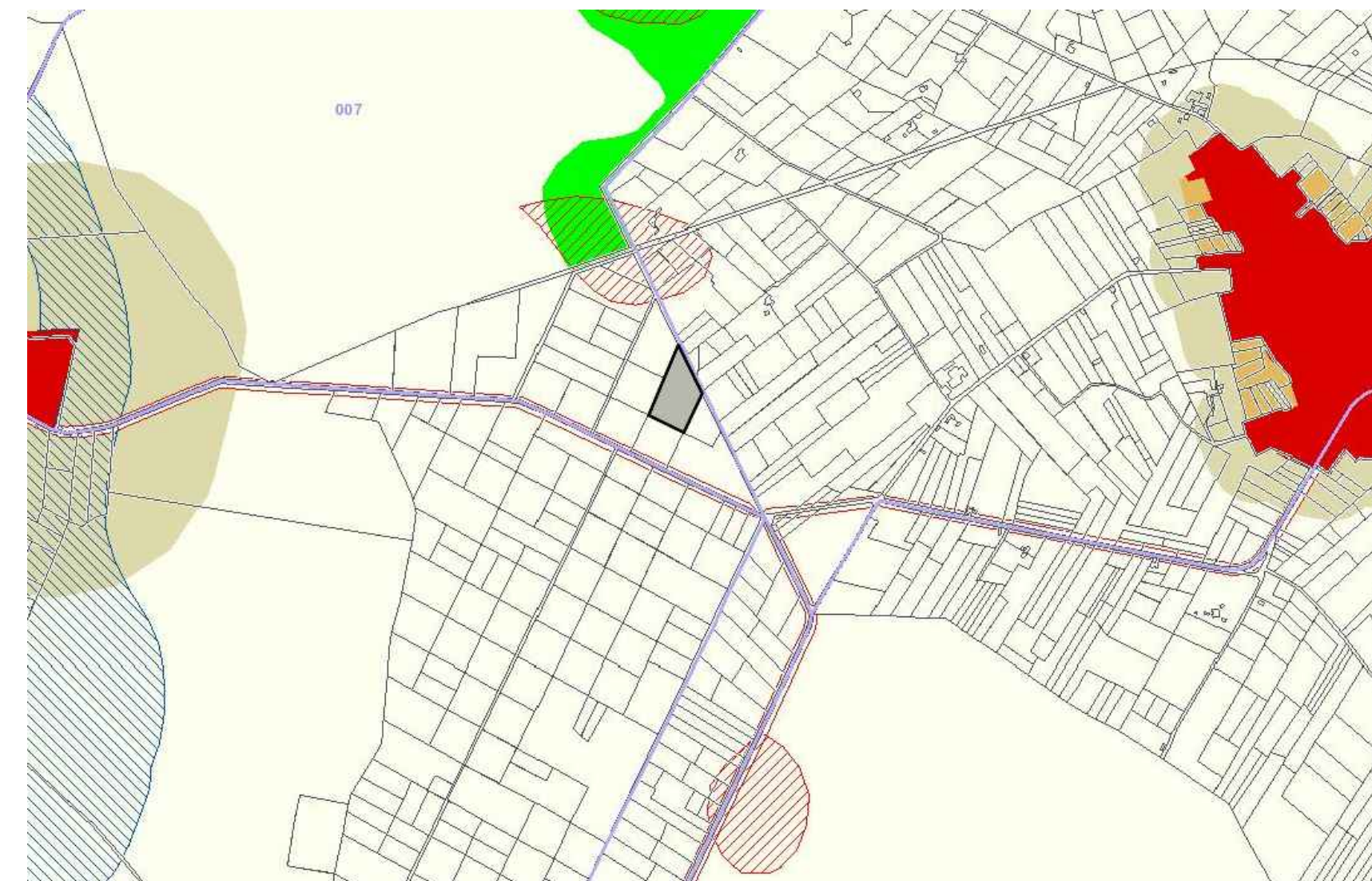
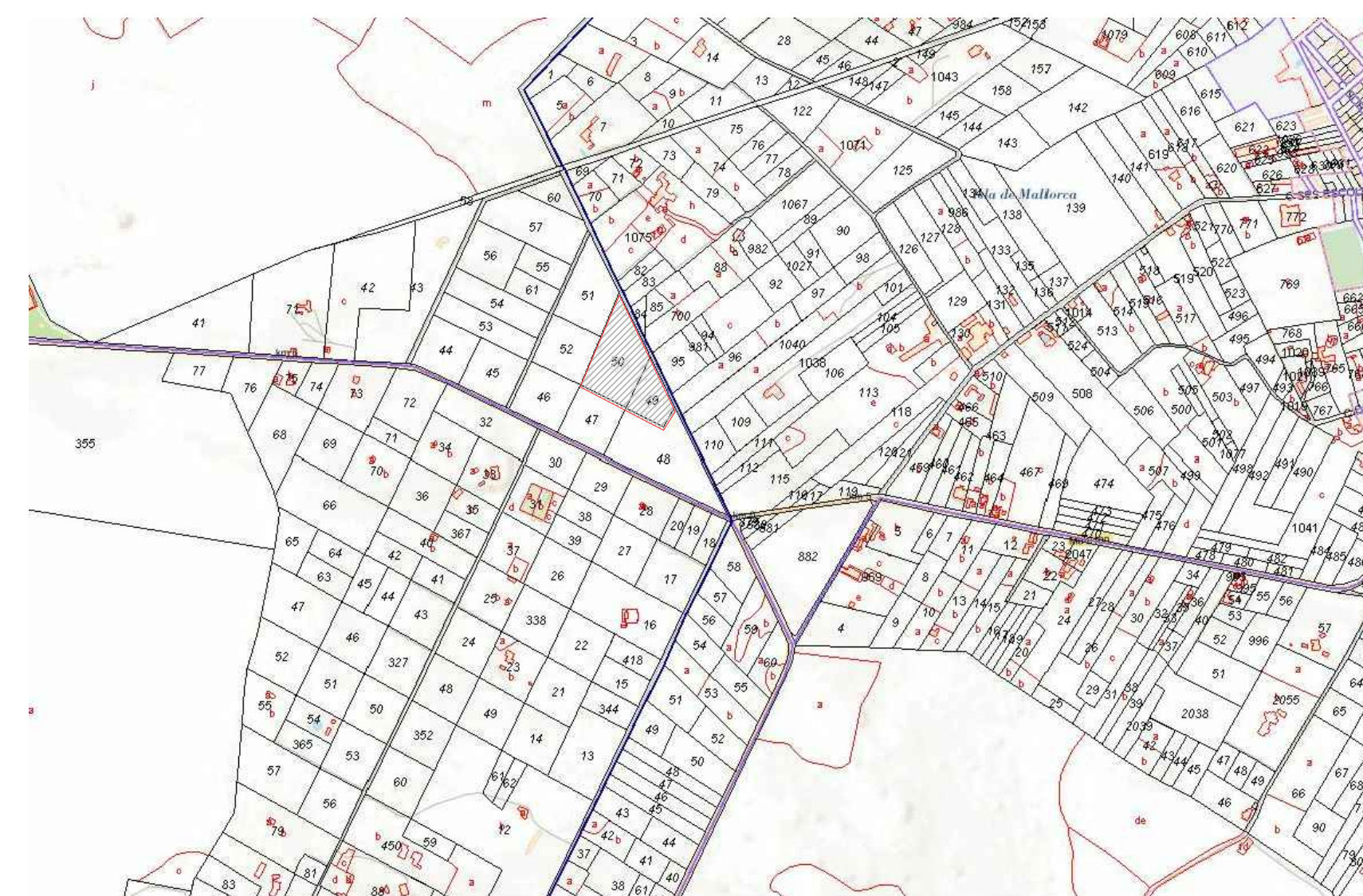


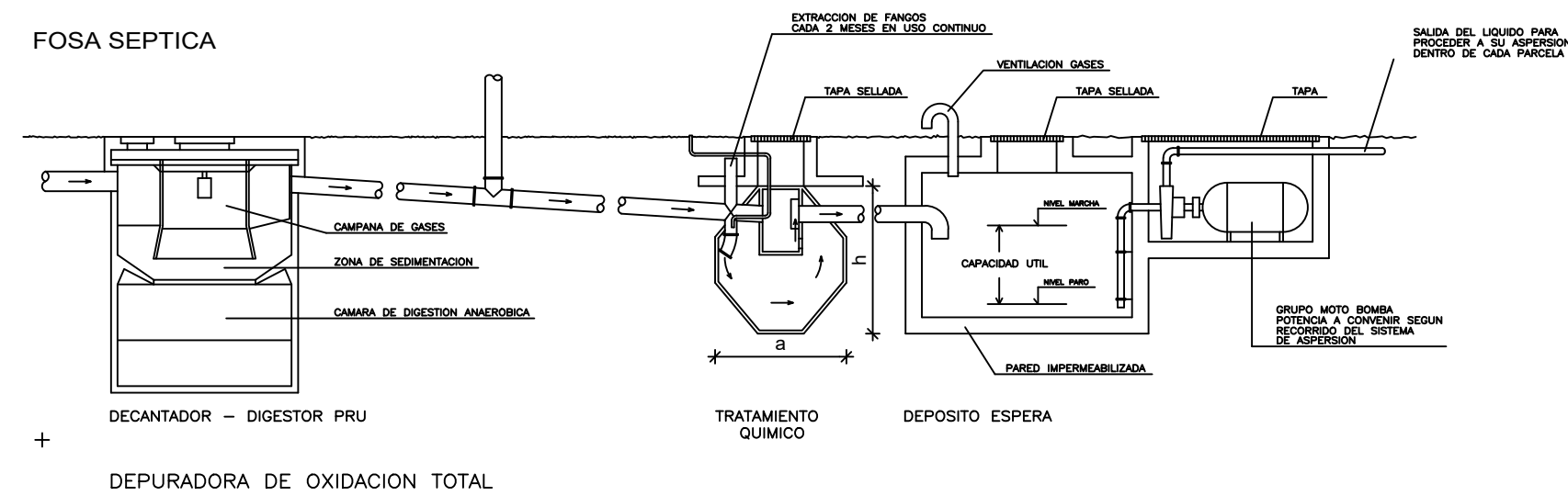
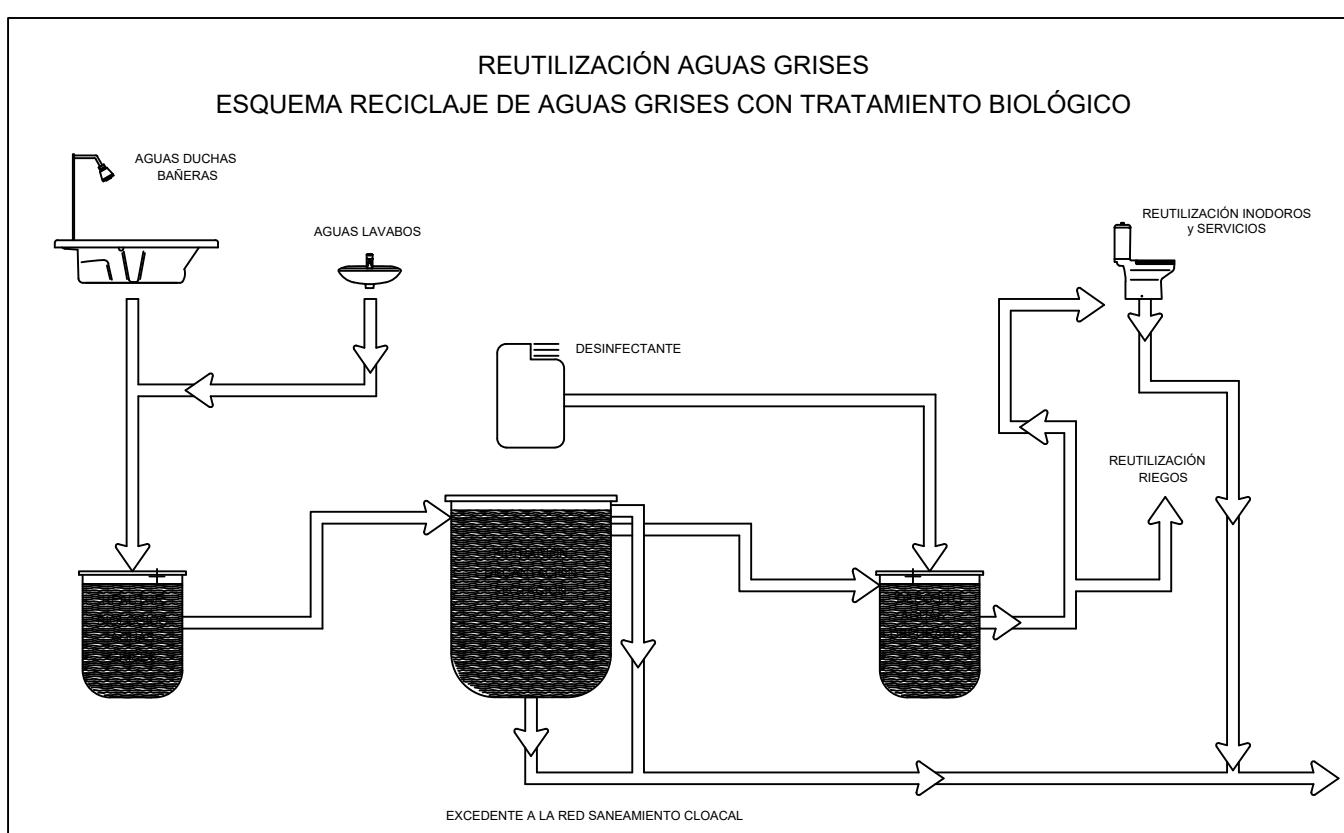
PARCELA RESULTANTE
Sup. medida: 15.615,23 m2



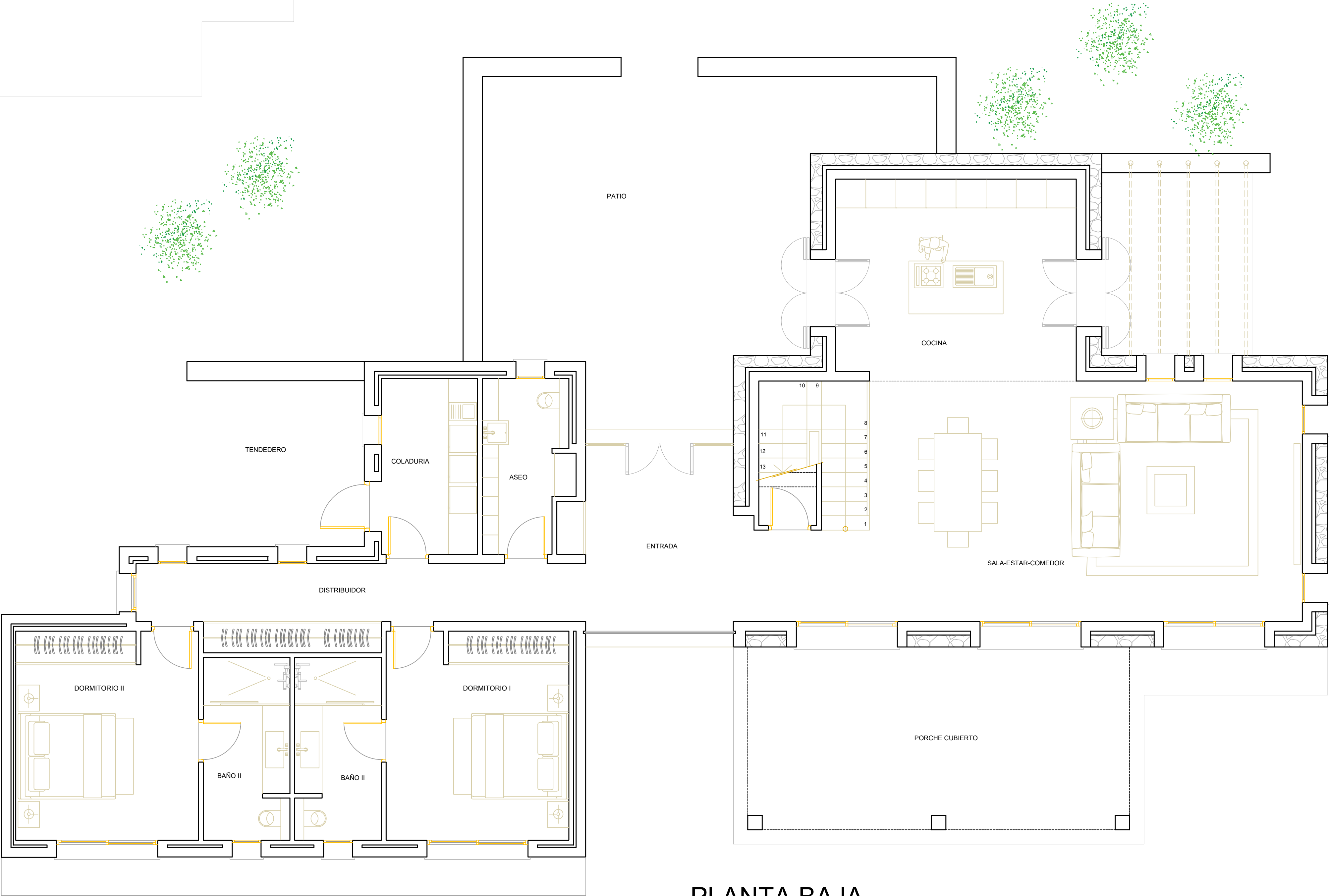
EMPLAZAMIENTO PLAN TERRITORIAL DE MALLORCA



CATASTRO

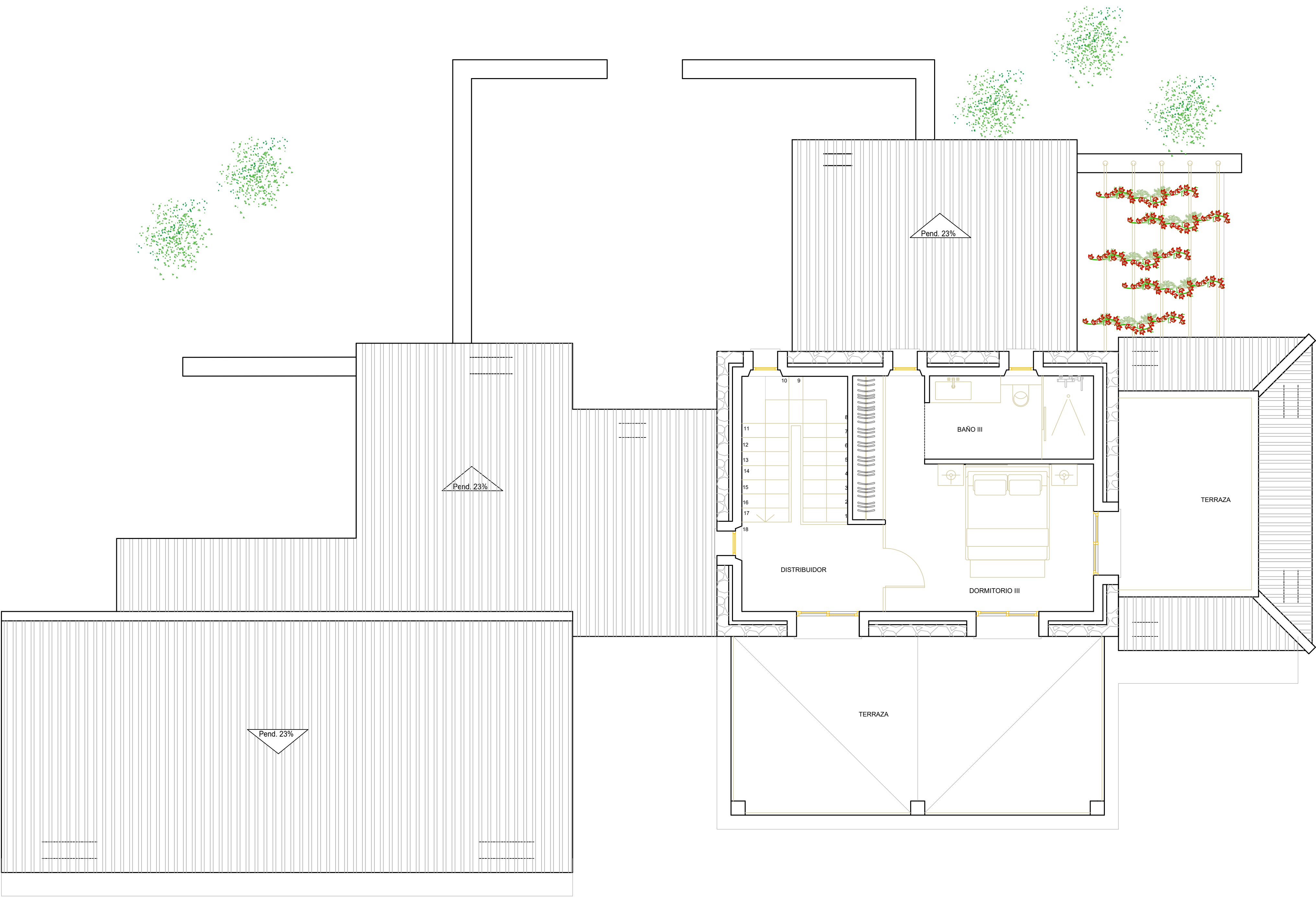


OCUPACIÓN VIVIENDA 247'53 M2
OCUPACIÓN PISCINA 60'00 M2
SUMA 307'53 M2 < 312'30 M2 (2%/15.615'23 m2)



PLANTA BAJA

SUP. CONSTRUIDA: 190'70 M2
SUP. PORCHE: 27,80 M2
SUP. PERGOLA I: 10'95 M2
SUP. PISCINA: 34,95 M2



PLANTA PISO

SUP. CONSTRUIDA: 40'00 M2

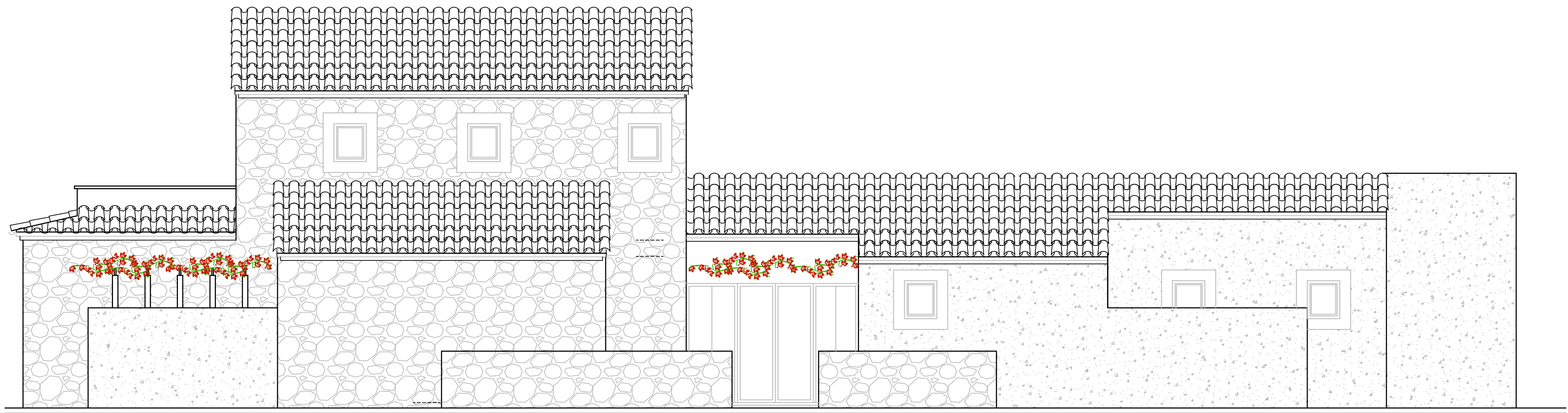


PLANTA SOTANO

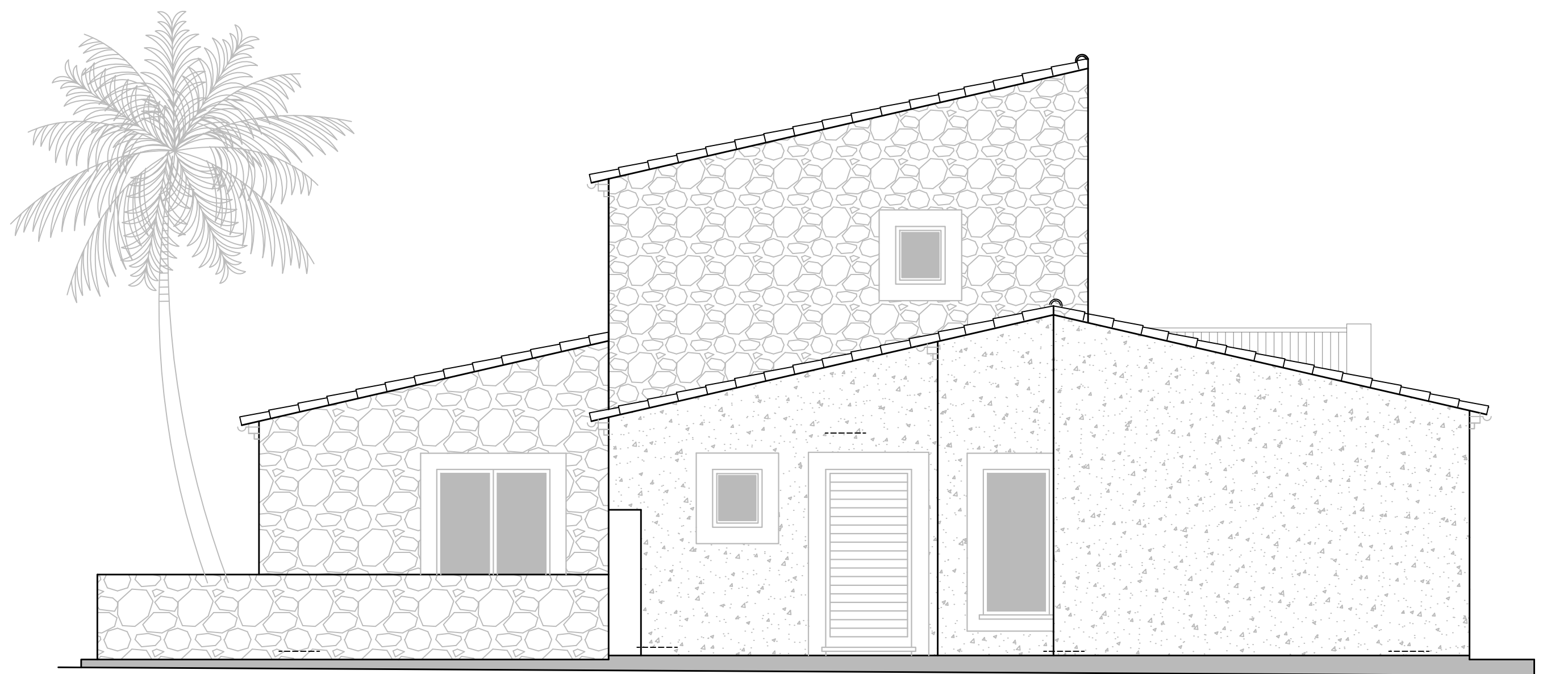
SUP. CONSTRUIDA: 69'02 M2



ALZADO POSTERIOR



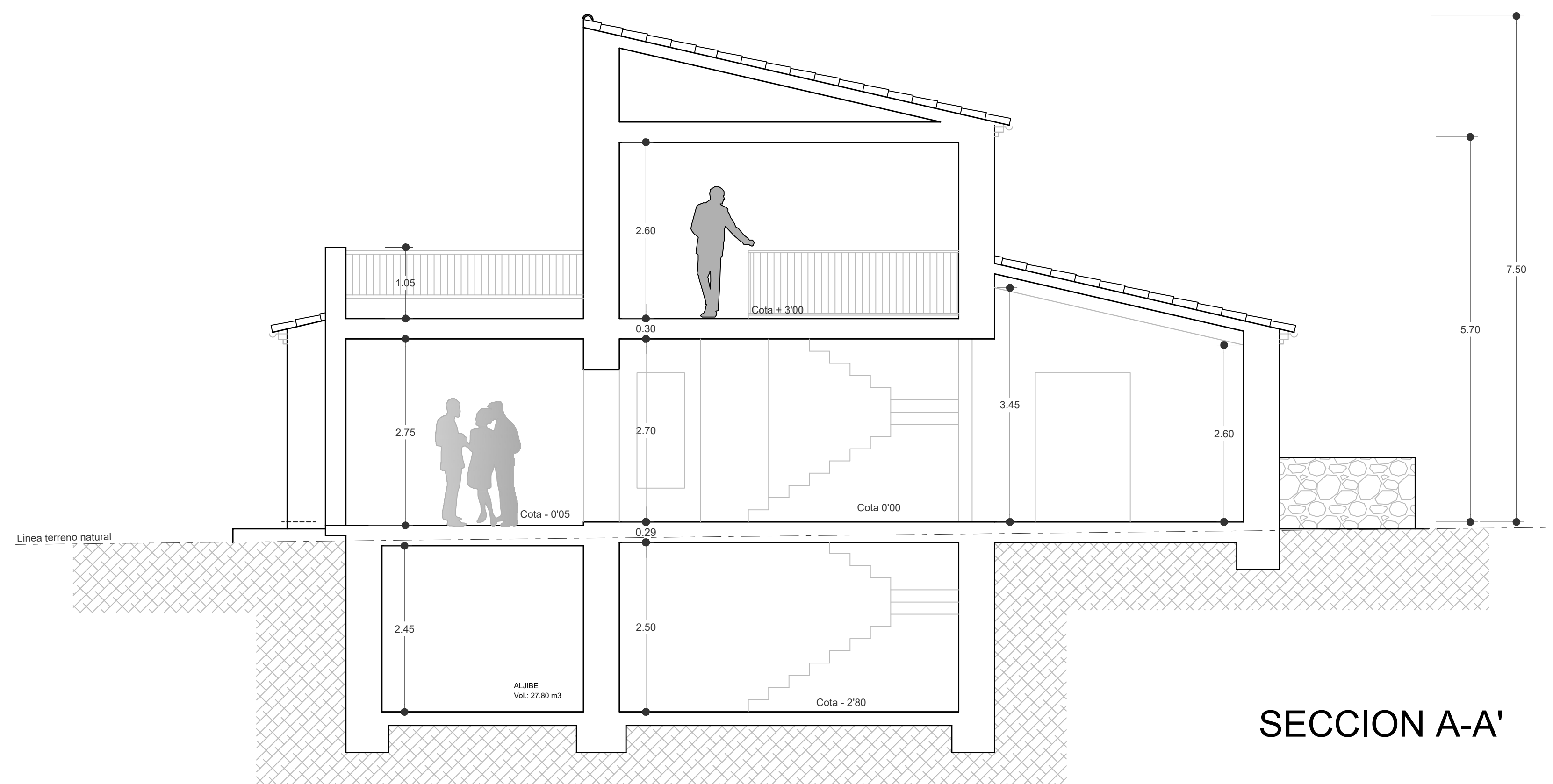
ALZADO FRONTAL



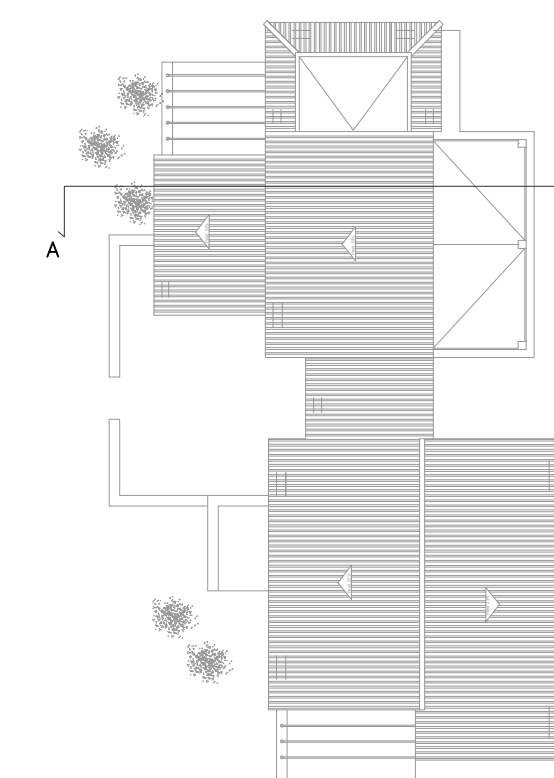
ALZADO IZQUIERDO

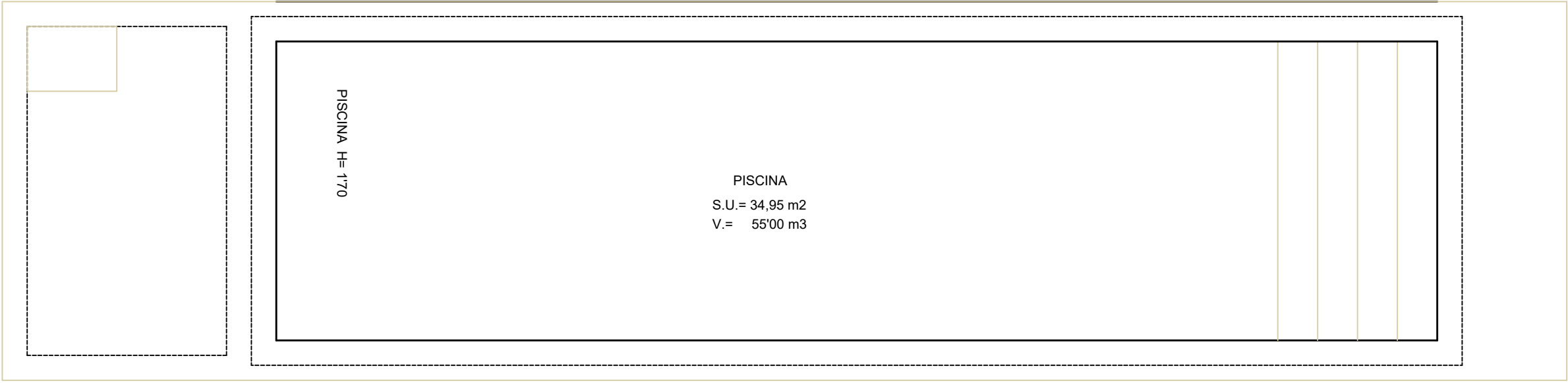


ALZADO DERECHO

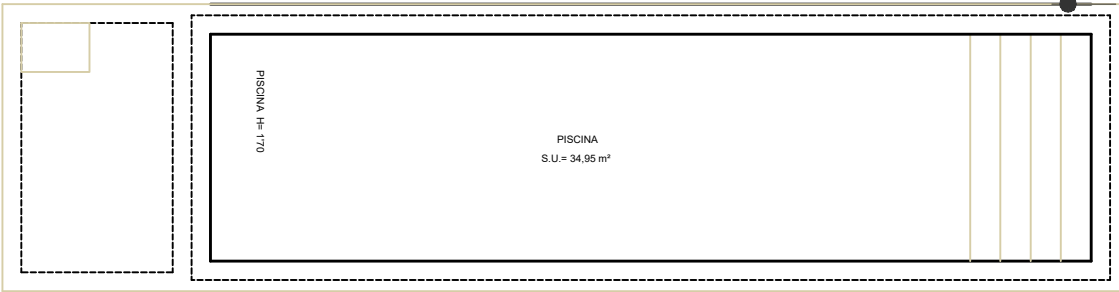
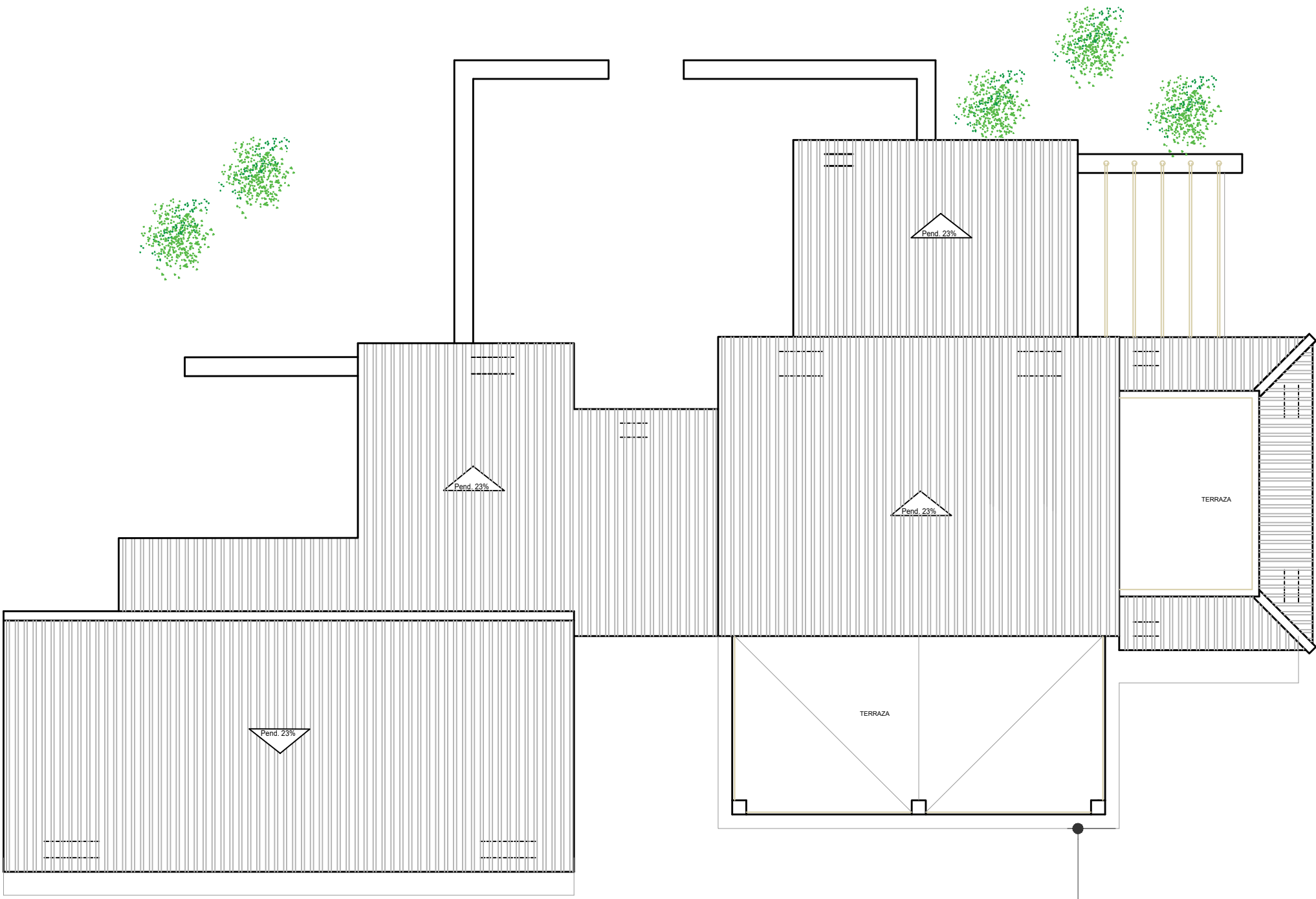


SECCION A-A'



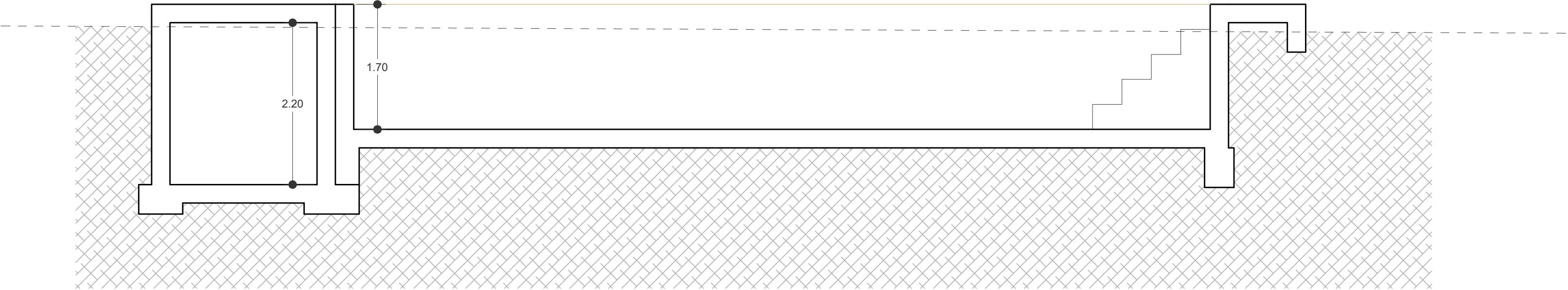


PLANTA PISCINA



8.80

CUBIERTA



SECCION B-B'

