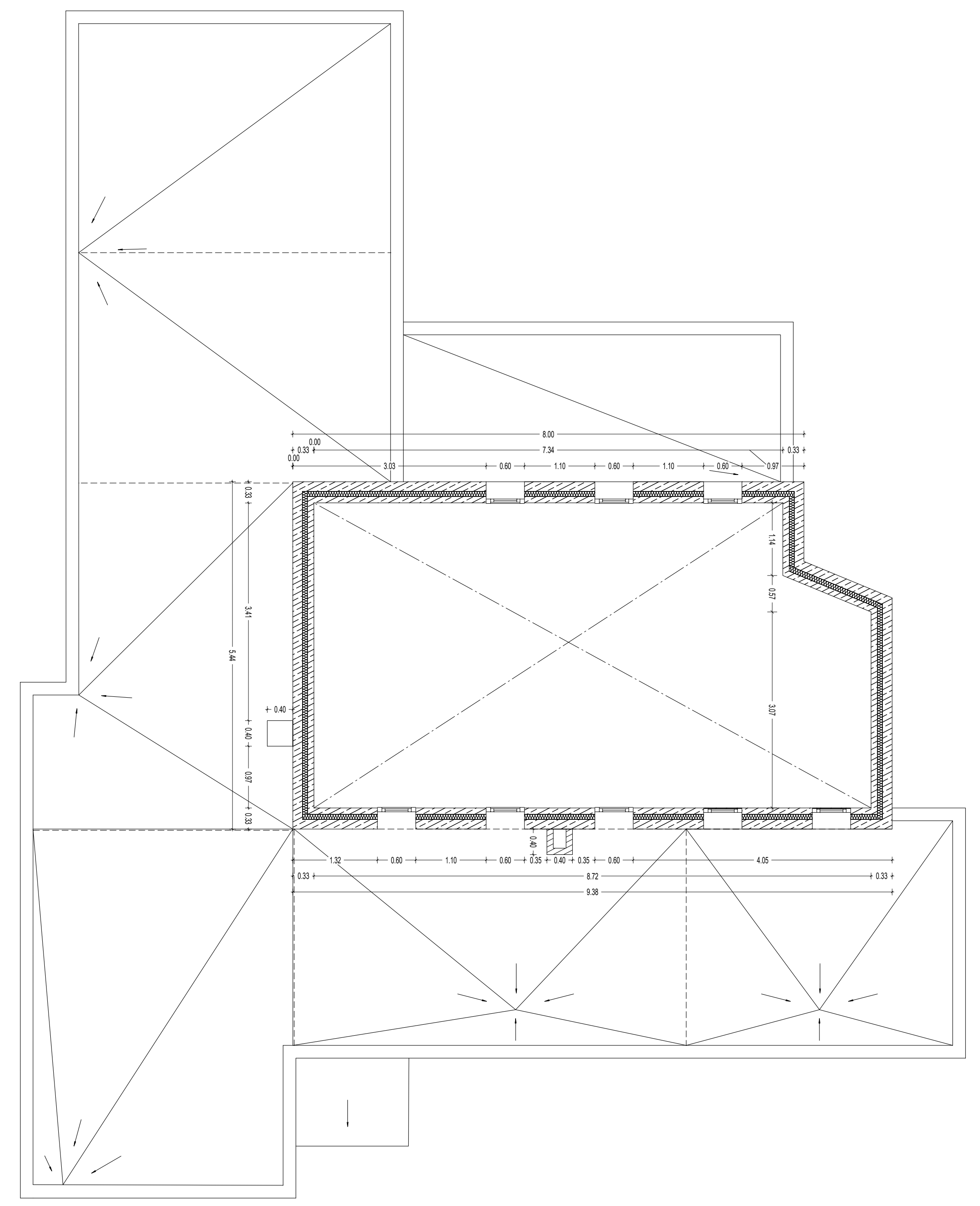
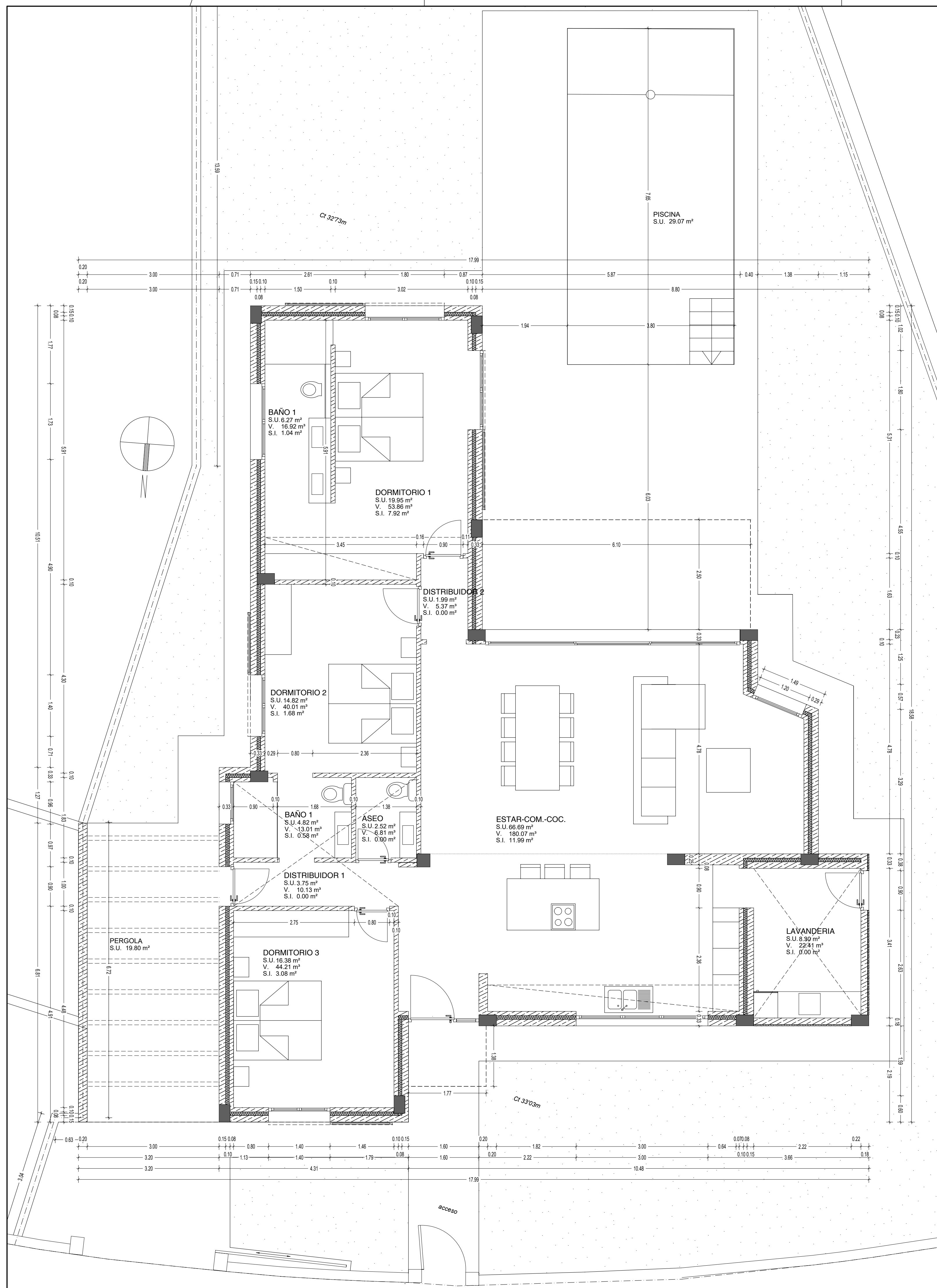
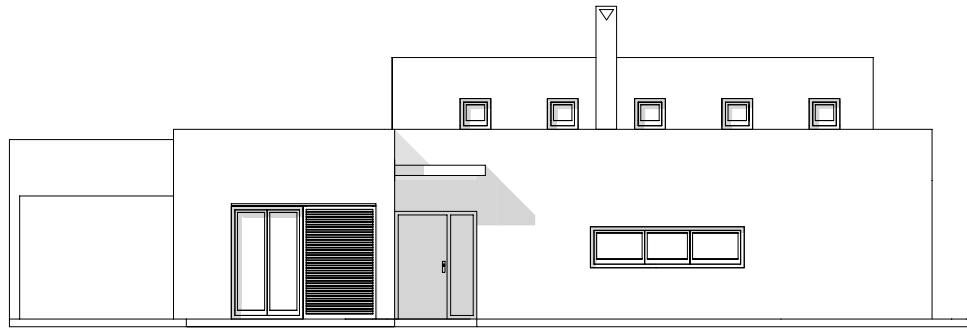


EMPLAZAMIENTO DEL SOLAR
 Sup. solar: 1.424,00 m²

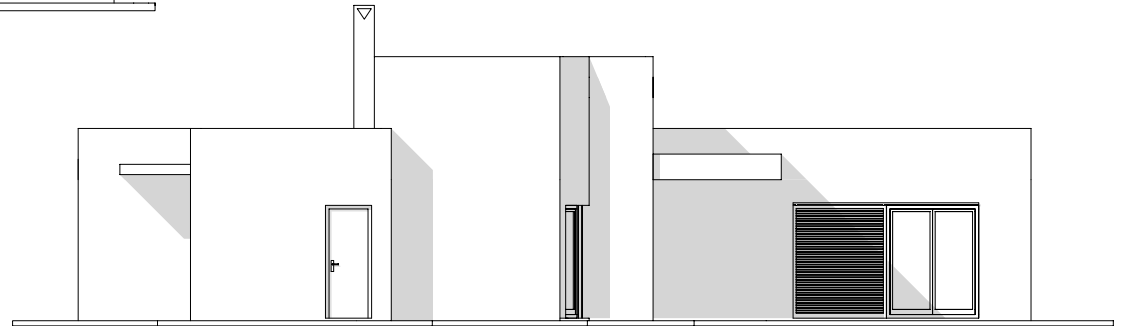
SUP. SOLAR 1424 m²

	SUBPARCELA	S. C. VIVIENDA	S. C. PORCHE	SUP. PERGIOLA	S. C. GARAGE	PISCINA	SUP. PAVIMENTO	SUP. AJARDINADA	VOLUMEN
VIVIENDA A En construcción existente	793,62m ²	160,03 m ²	5,76 m ²	41,44 m ²	17,16 m ²	32,00 m ²	118,05m ²	419,18m ²	455,92 m ³
VIVIENDA B	630,38 m ²	171,56 m ²		21,76 m ²		29,17 m ²	114,46 m ²	293,43m ²	Doble altura 48,87 x 1,60 = 78,19 m ³ Vivienda 171,96 x 3,2 = 549,00 m ³
TOTAL	1424 m ²	331,59 m ²	5,76 m ²	63,20m ²	17,16 m ²	61,17 m ²	232,51 m ²	712,61m ²	1003,11 m ³

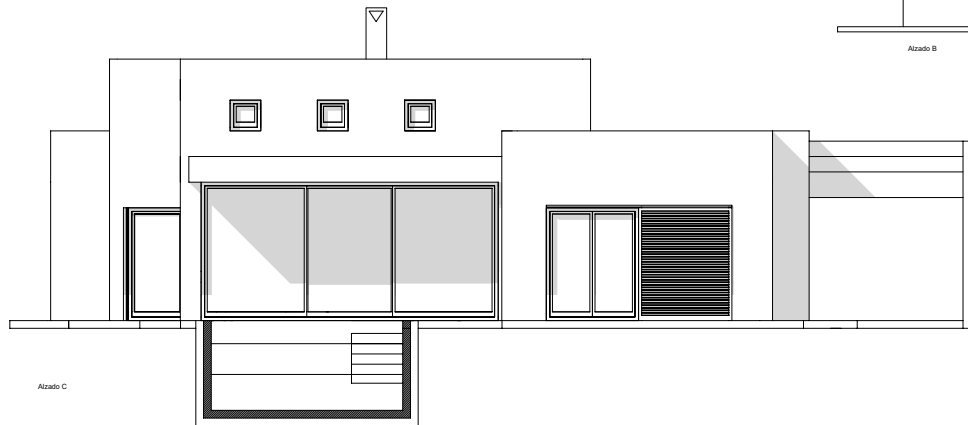




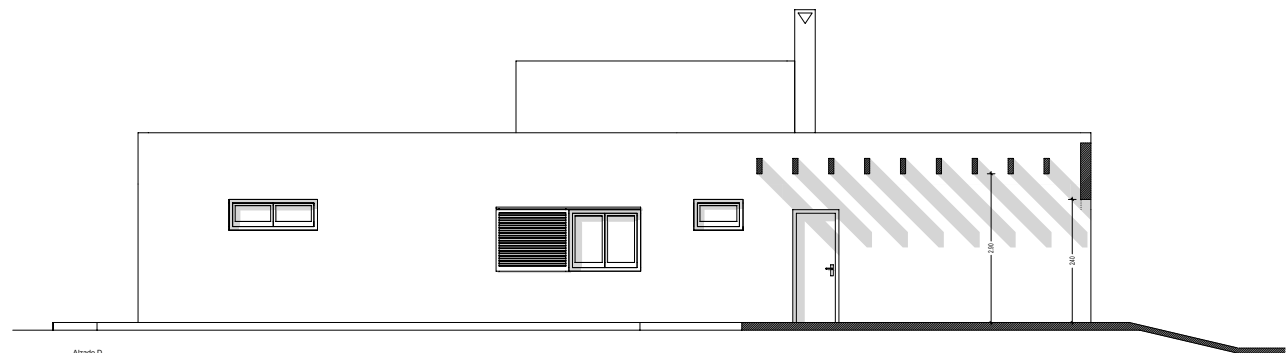
Alzado A



Alzado B



Alzado C



Alzado D

