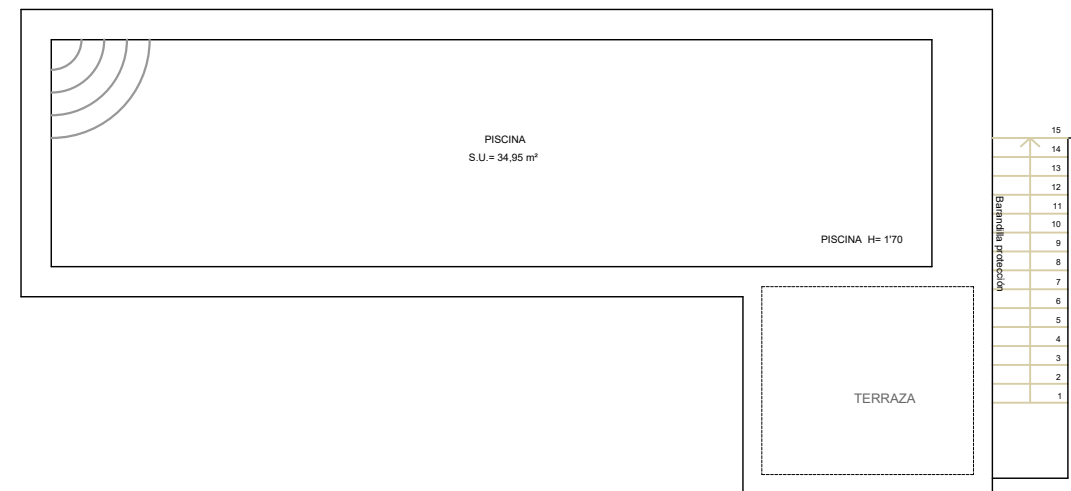
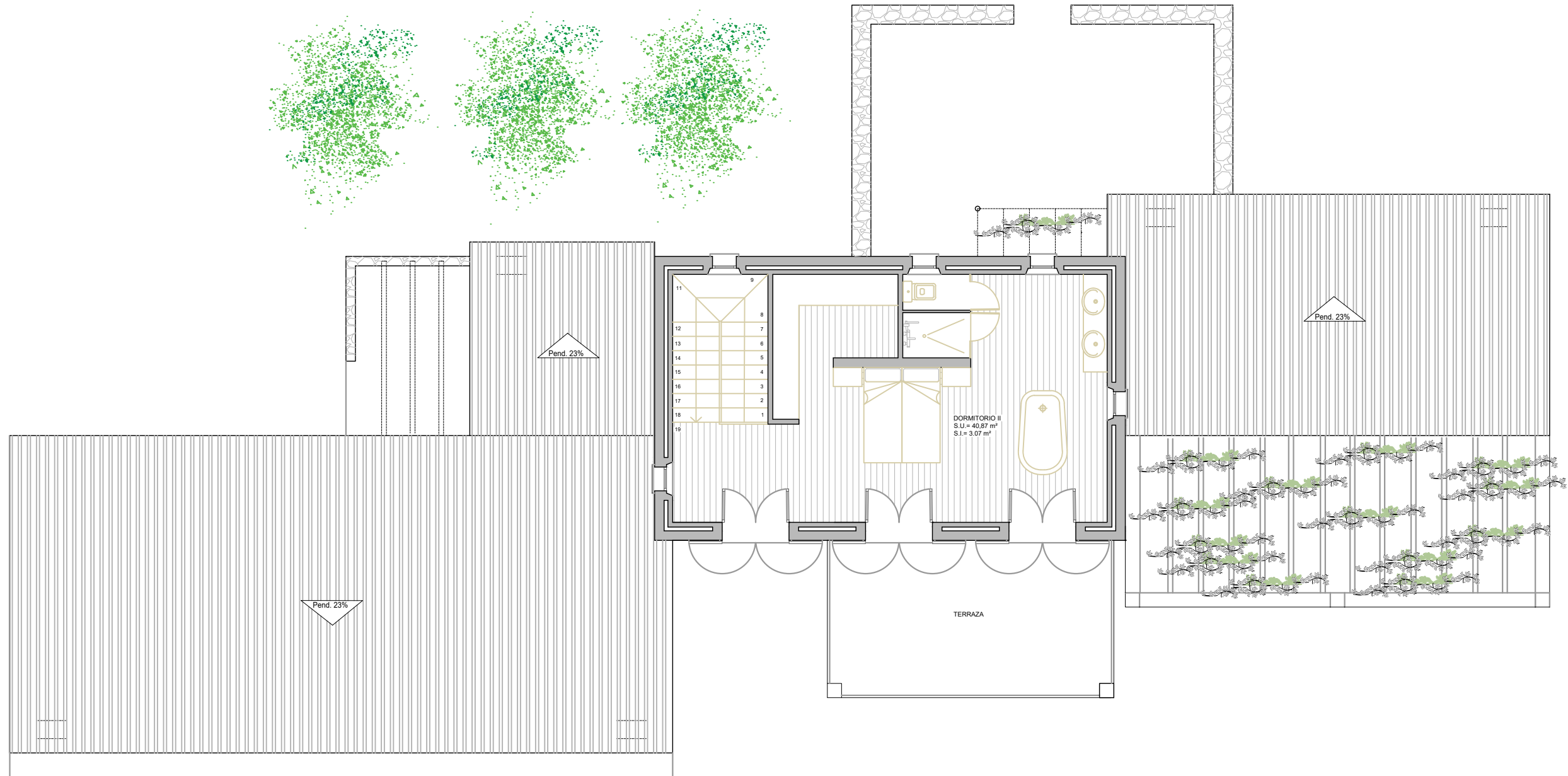


PLANTA BAJA

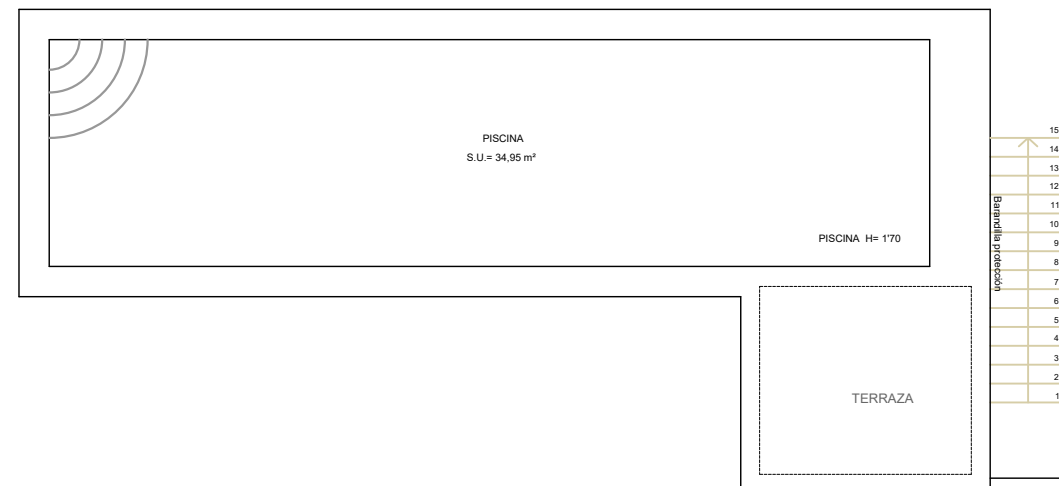
SUP. CONSTRUIDA:	203'90 M2
SUP. PORCHE:	19'80 M2
SUP. PERGOLA 1:	2'72 M2
SUP. PERGOLA 2:	32'03 M2
SUP. PISCINA:	34,95 M2





PLANTA BAJA

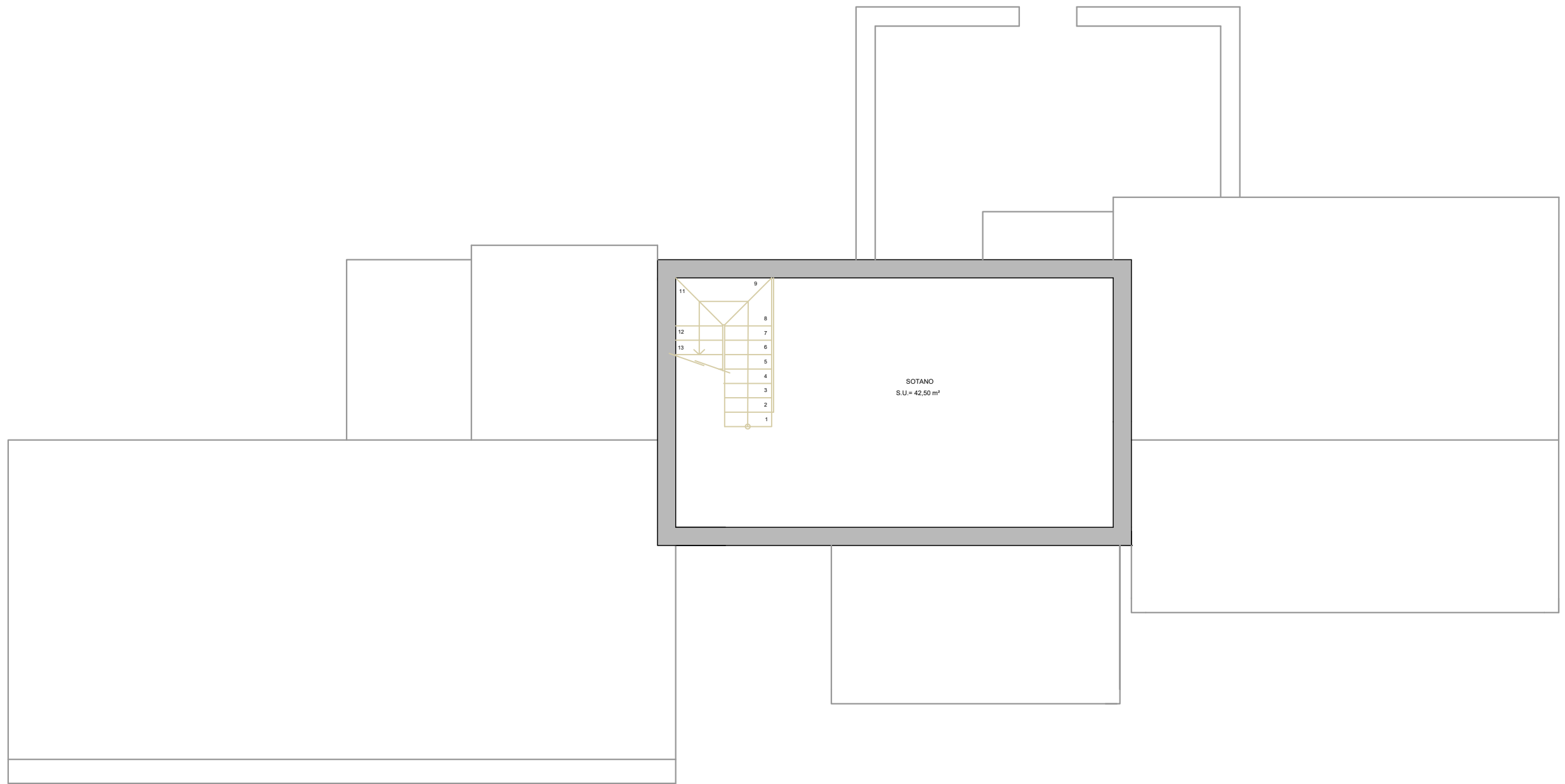
SUP. CONSTRUIDA: 53'72 M2







ALZADO FRONTAL



PLANTA SOTANO

SUP. CONSTRUIDA: 58'88 M2

