

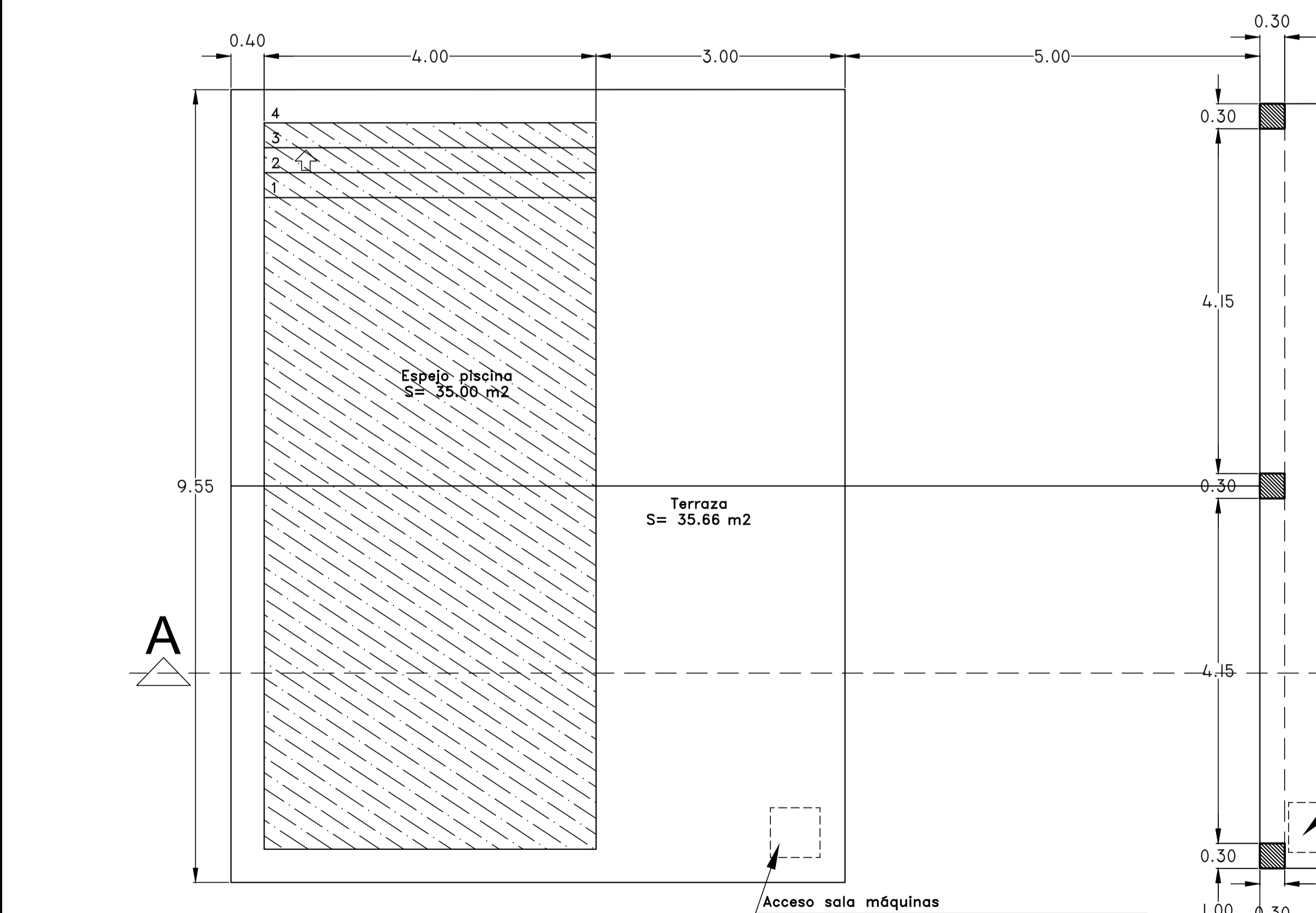
OCUPACIÓN: 236,70 + 32,20 + 30,00 + 84,74 + 18,00 + 35,00 : 436,64 m²

EDIFICABILIDAD: 236,70 + 32,20 (50%) + 30,00 : 282,80 m²

VOLUMEN: 824.95 m³

(VOLUMEN: VIV: (92.70 x 3.55) + (144.00 x 2.60) + (32.20 (50%) x 2.70: 746.95 m³

VOLUMEN GARAJE: 30.00 x 2.60: 78.00 m³)



| APARTADO PLANTAS | SUPERFICIE ÚTIL | SUP. TERRAZAS N.C. | SUP. CERRADA VIVIENDA | SUP. PORCHES | PÉRGOLA | GARAGE | PISCINA |
|------------------|-----------------|--------------------|-----------------------|--------------|----------|---------|---------|
| BAJA | 227.38 | 84.74 | 236.70 | 32.20 | 18.00 | 30.00 | 35.00 |
| SOTANO | | | | | | | |
| TOTAL | 265.88M2 | 84.74M2 | 236.70 M2 | 32.20M2 | 18.00 M2 | 30.00M2 | 35.00M2 |



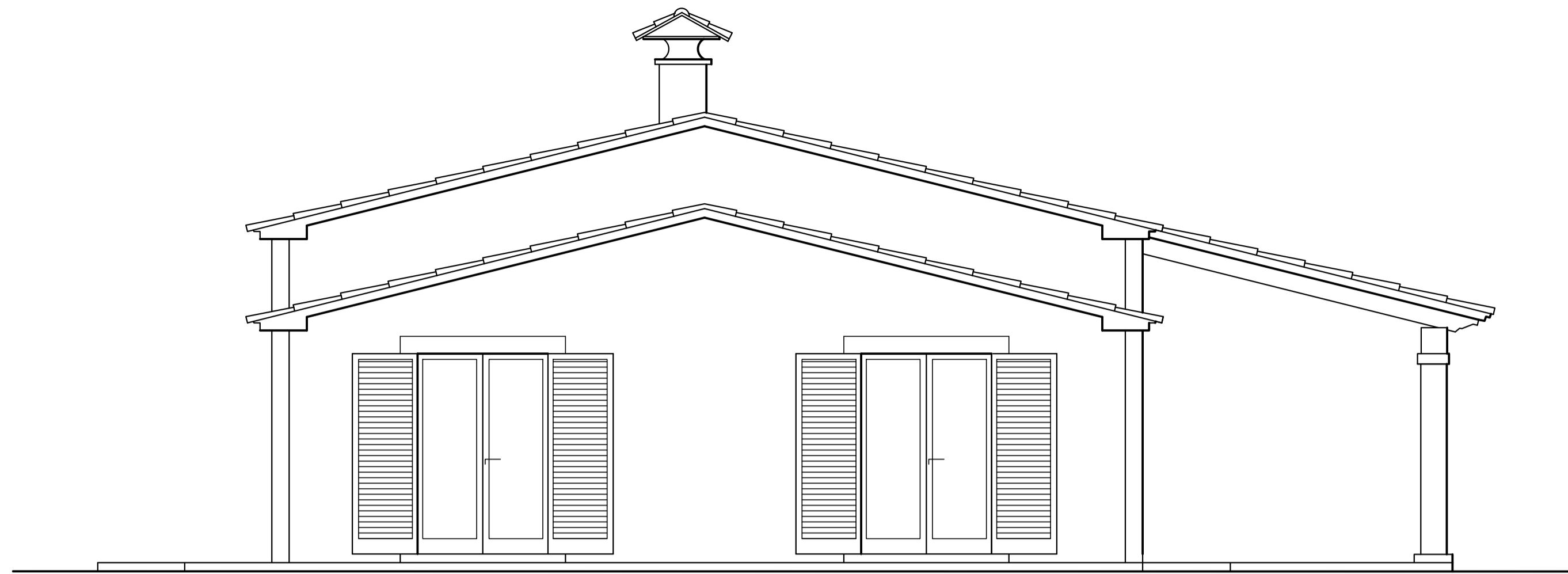
A

A'

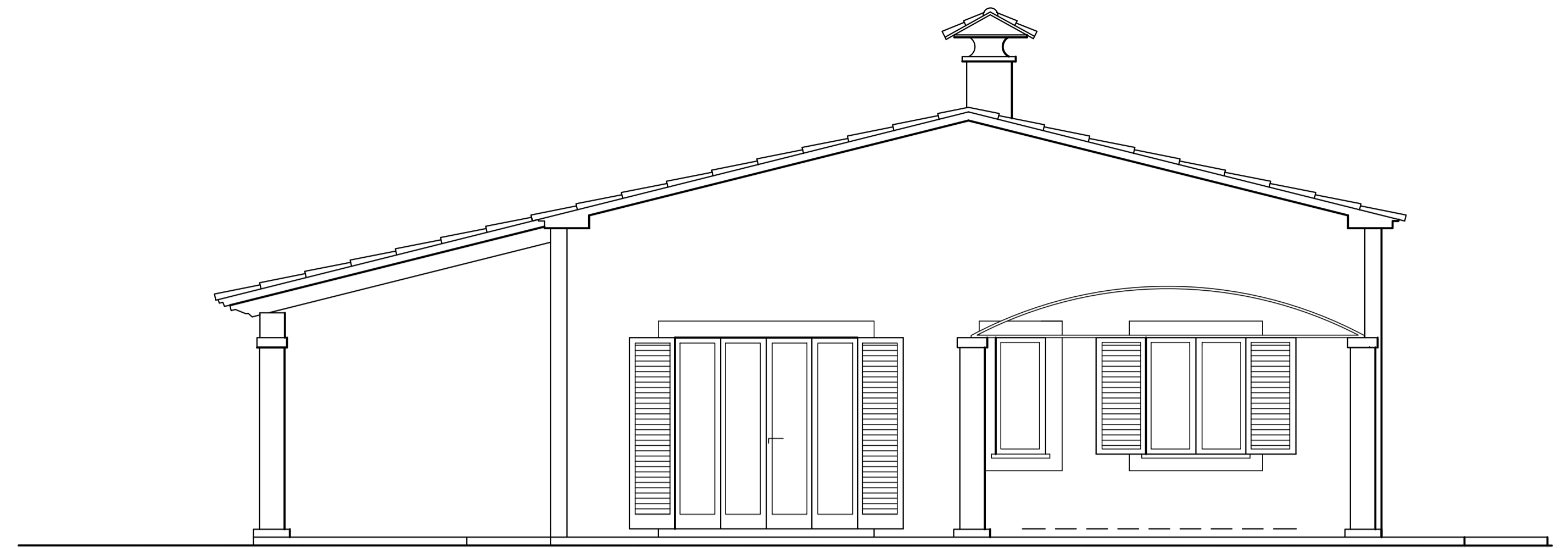
B

B'

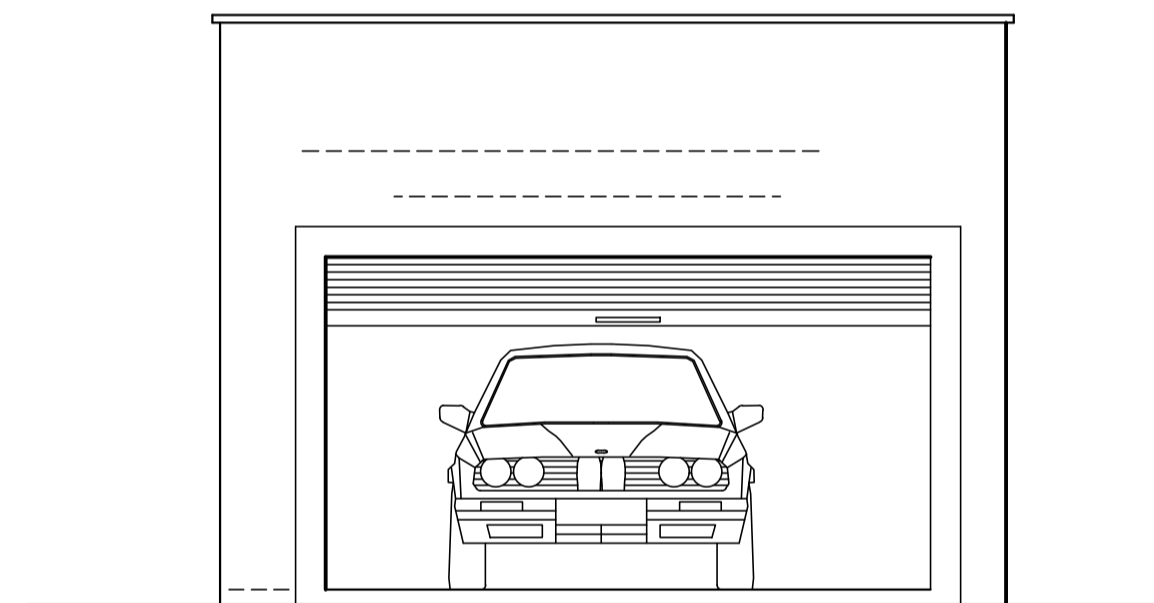
PLT. BAJA DISTRIBUCIÓN



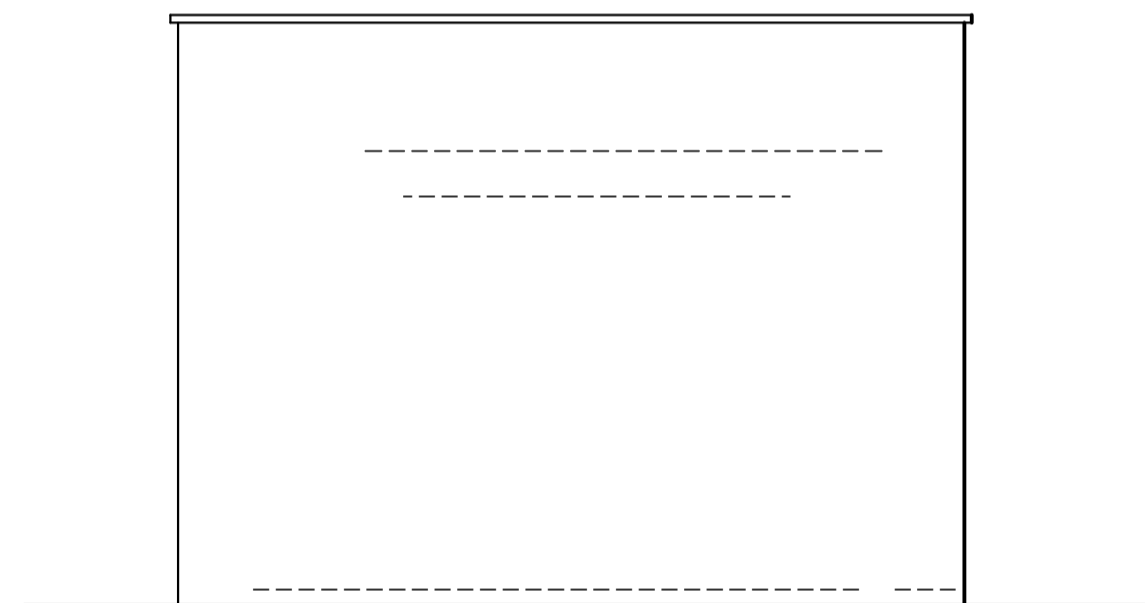
ALZADO LAT. DERECHO



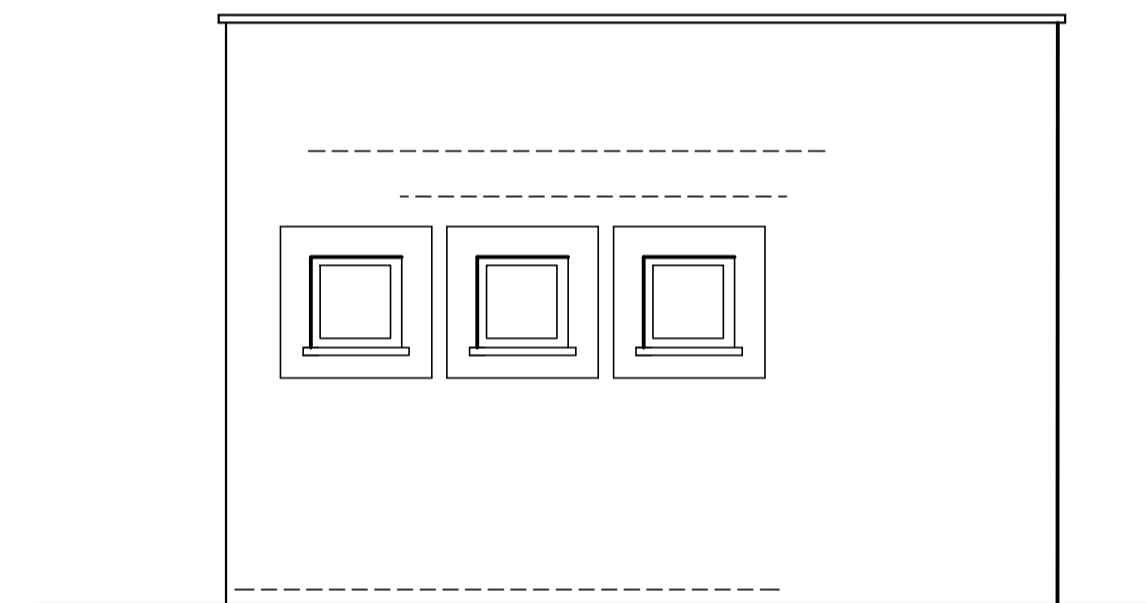
ALZADO LAT. IZQUIERDO



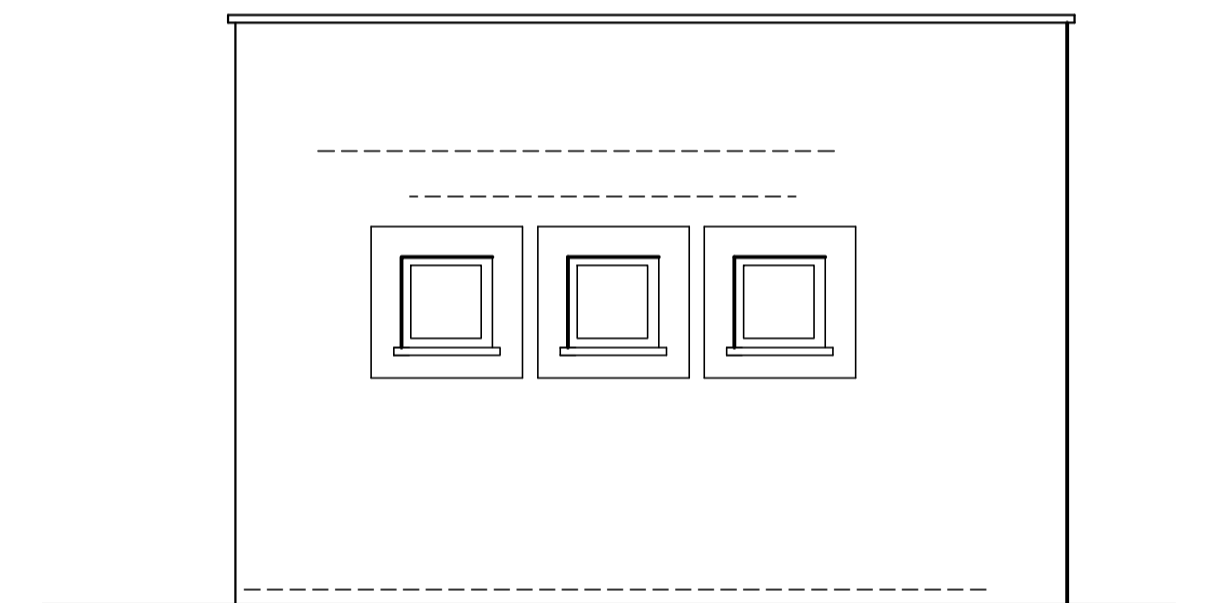
ALZADO FRONTAL GARAGE



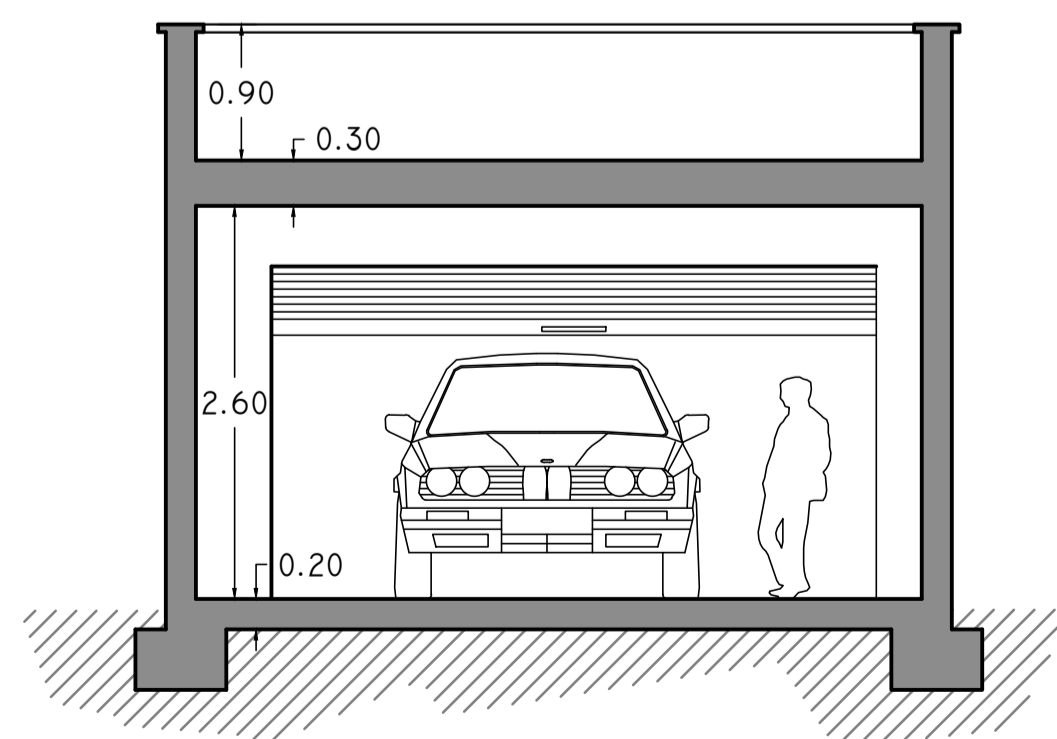
ALZADO POSTERIOR GARAGE



ALZADO DERECHO GARAGE



ALZADO IZQUIERDO GARAGE



SECCION B-B'