

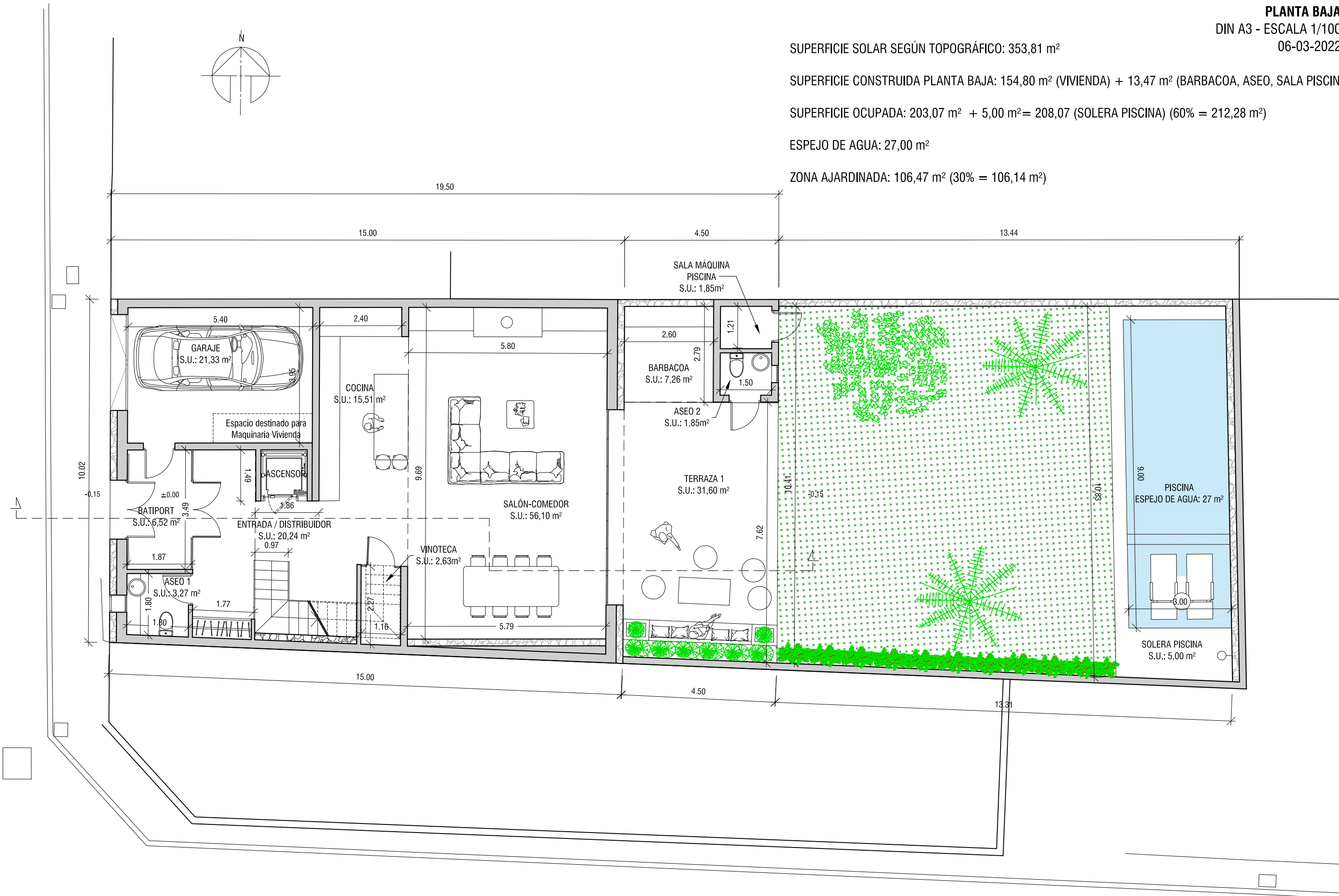
SUPERFICIE SOLAR SEGÚN TOPOGRÁFICO: 353,81 m²

SUPERFICIE CONSTRUIDA PLANTA BAJA: 154,80 m² (VIVIENDA) + 13,47 m² (BARBACOA, ASEO, SALA PISCINA)

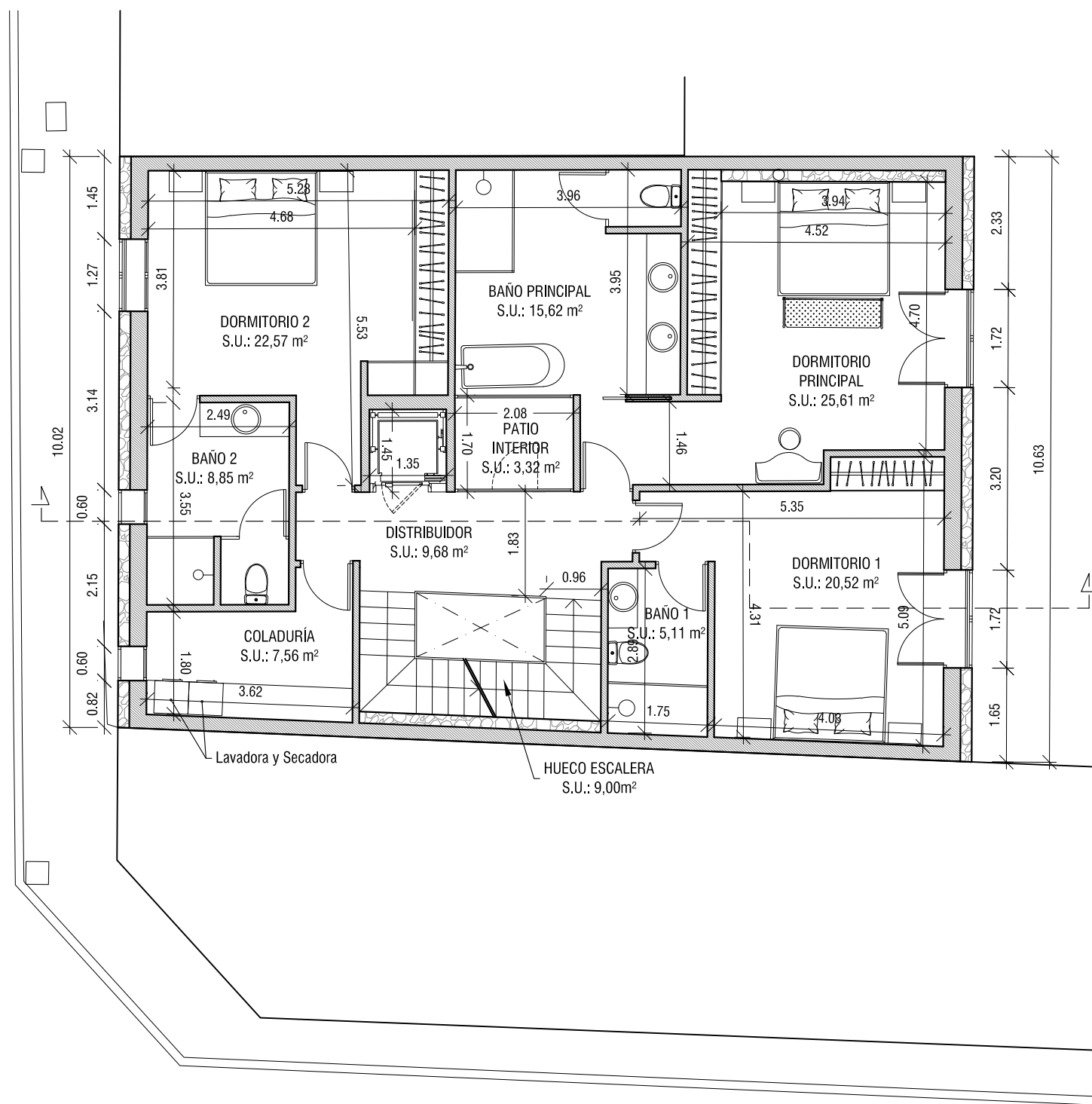
SUPERFICIE OCUPADA: 203,07 m² + 5,00 m² = 208,07 (SOLERA PISCINA) (60% = 212,28 m²)

ESPEJO DE AGUA: 27,00 m²

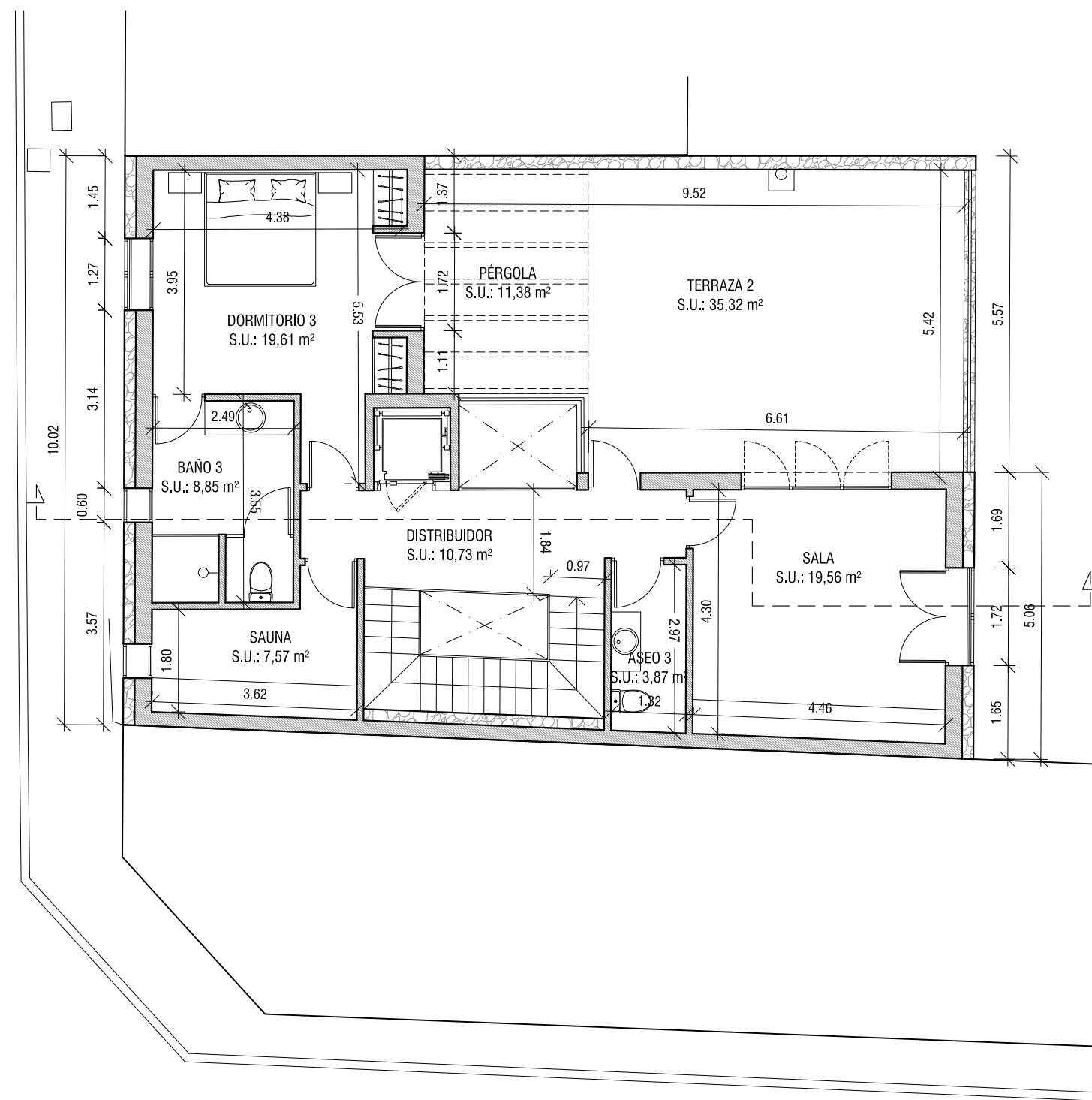
ZONA AJARDINADA: 106,47 m² (30% = 106,14 m²)

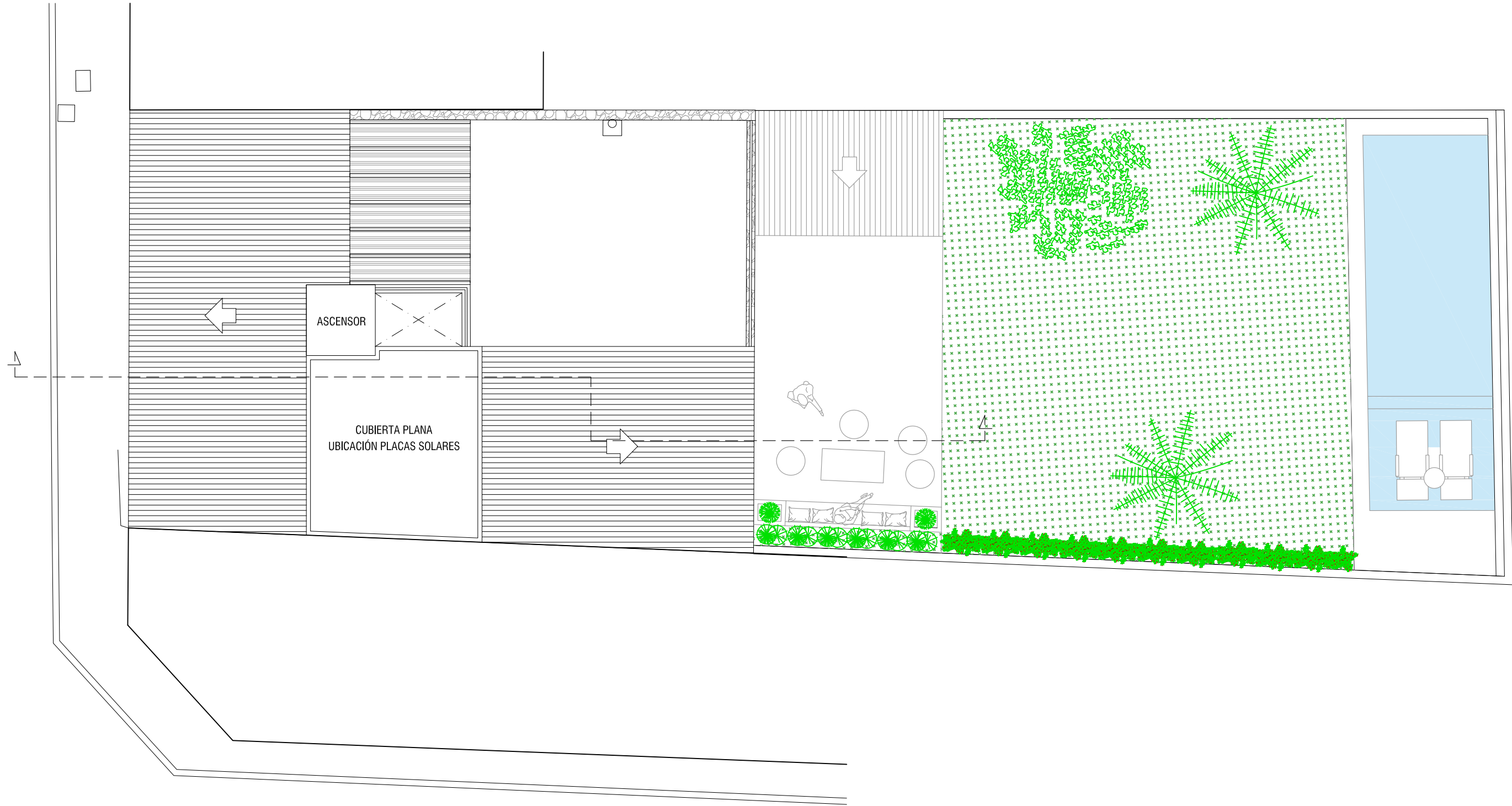


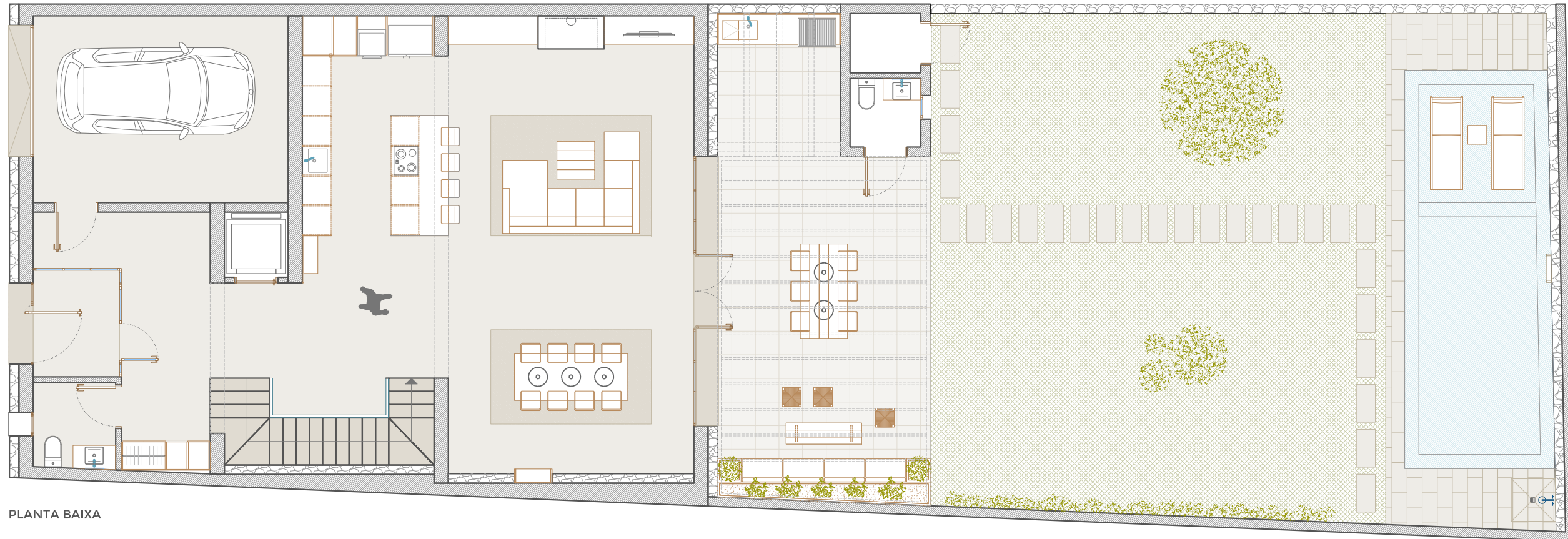
PLANTA PISO 1
 SUPERFICIE CONSTRUIDA PLANTA BAJA: 154,80 m²



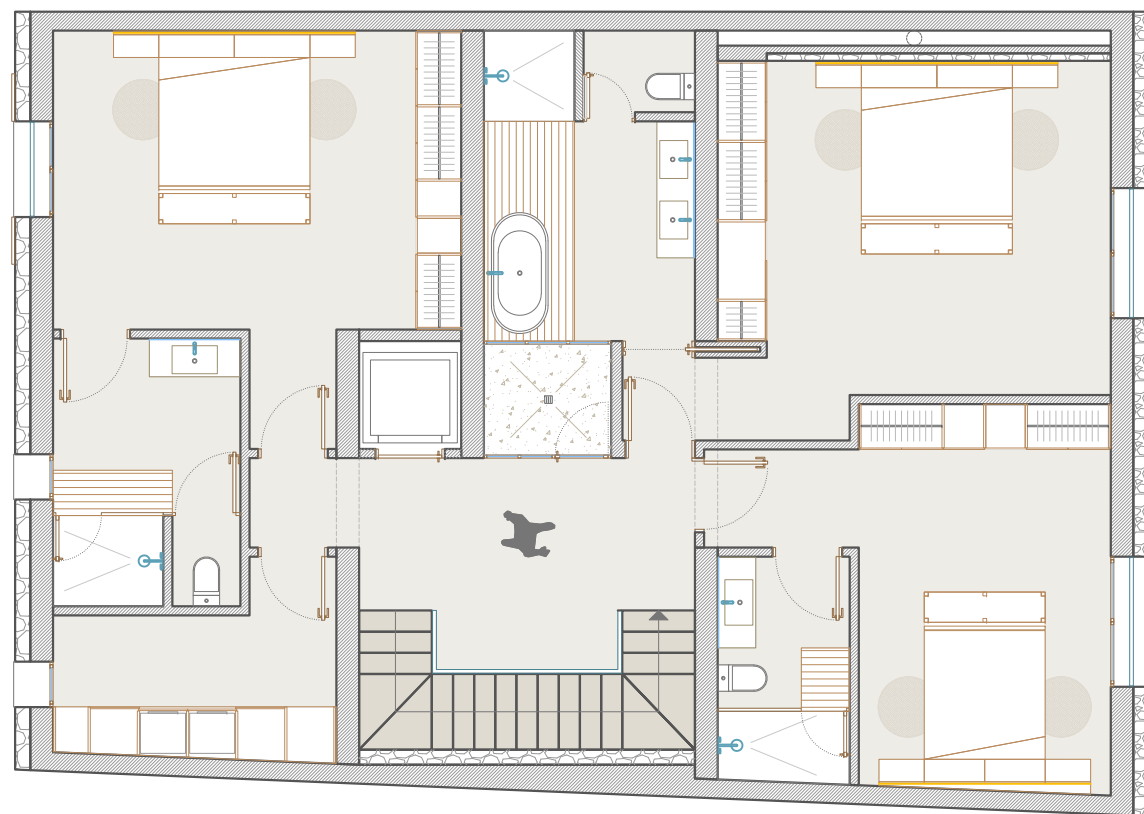
PLANTA PISO 2
 SUPERFICIE CONSTRUIDA PLANTA BAJA: 98,80 m²



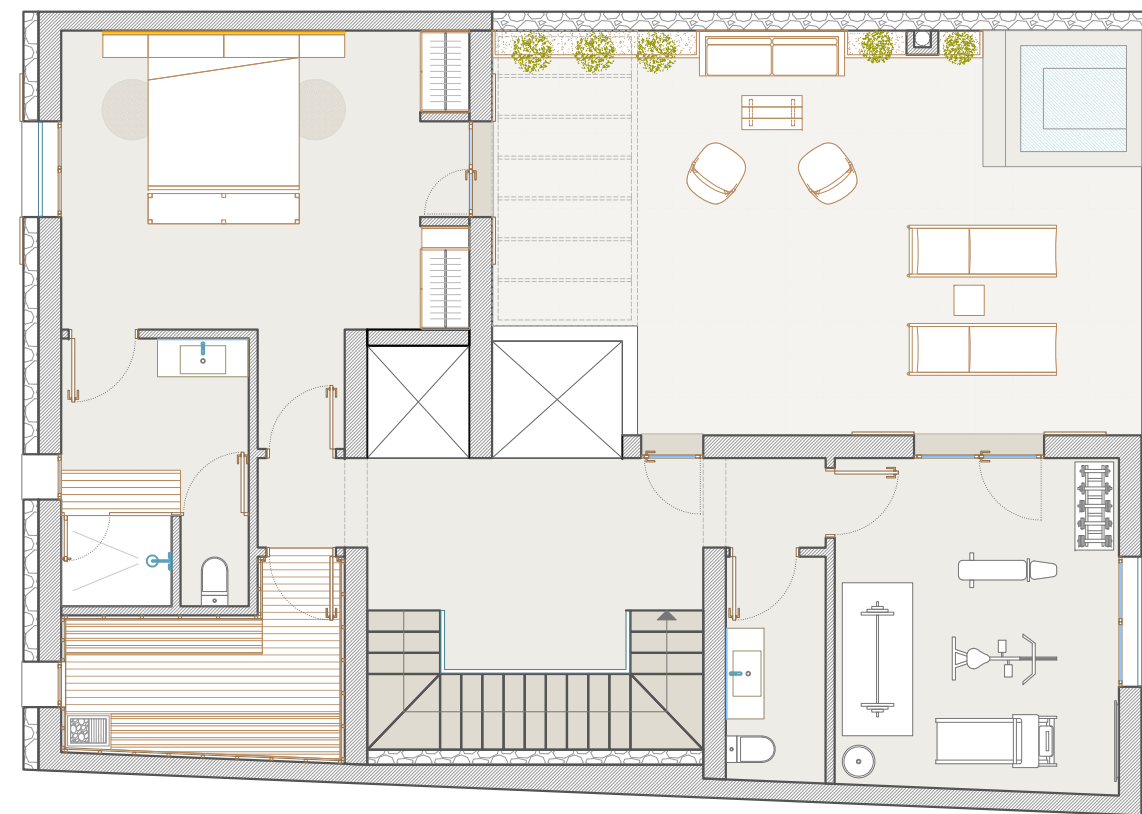




PLANTA BAIXA



PLANTA 1



PLANTA 2

