

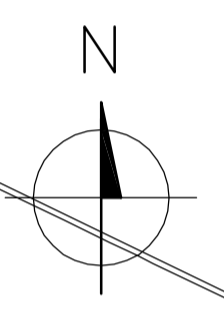
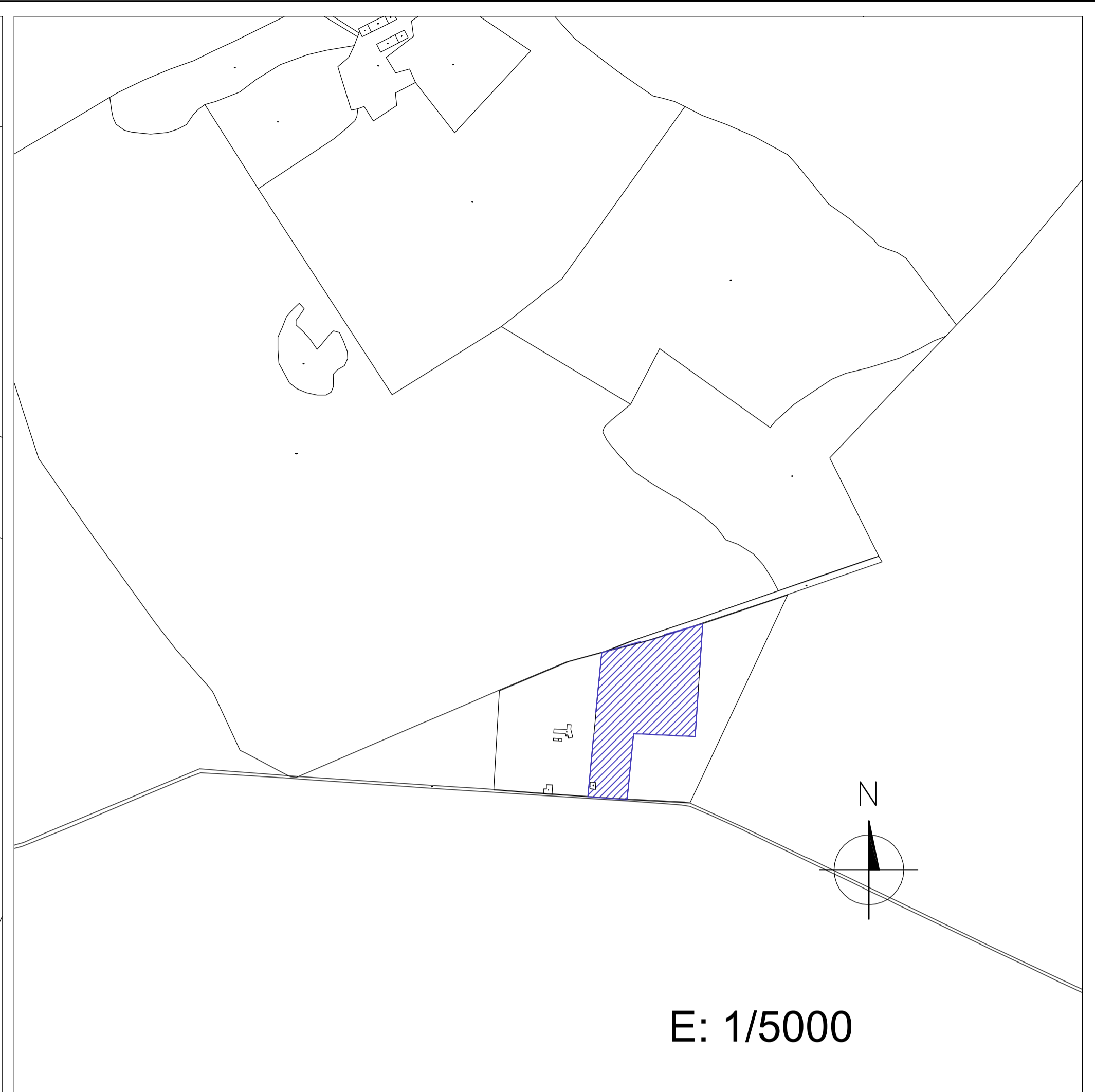
JARDINERÍA - MASA ARBOLADA  
222.17 m<sup>2</sup> ocupación / 5 m<sup>2</sup> = 45 árboles

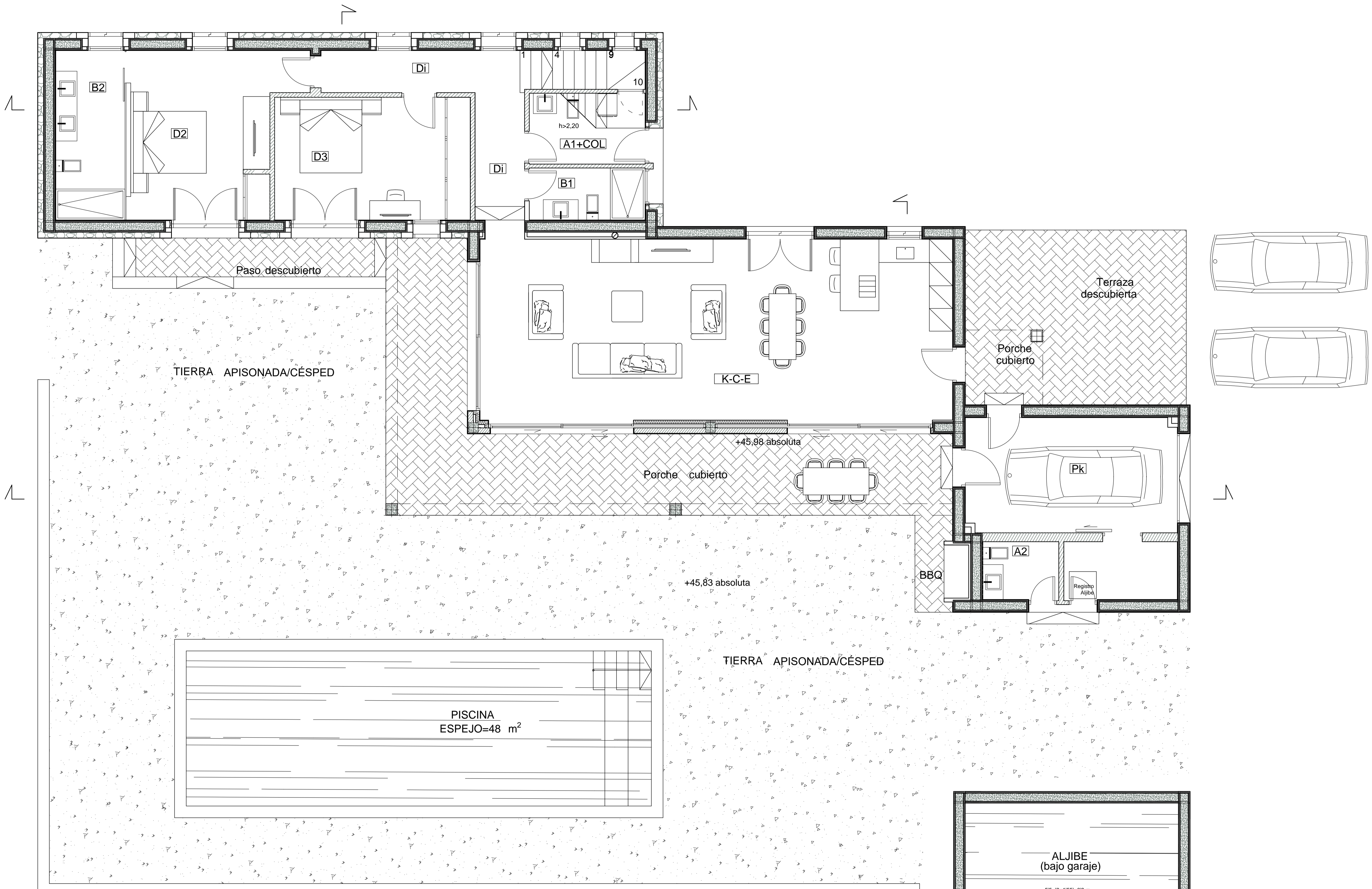
- 25 ÁRBOLES EXISTENTES ZONA SUR
- 12 ÁRBOLES EXISTENTES ZONA SUR ESTE

25 + 12 árboles existentes = 37 árboles existentes  
45 árboles necesitamos - 37 árboles existentes = 8 árboles nuevos

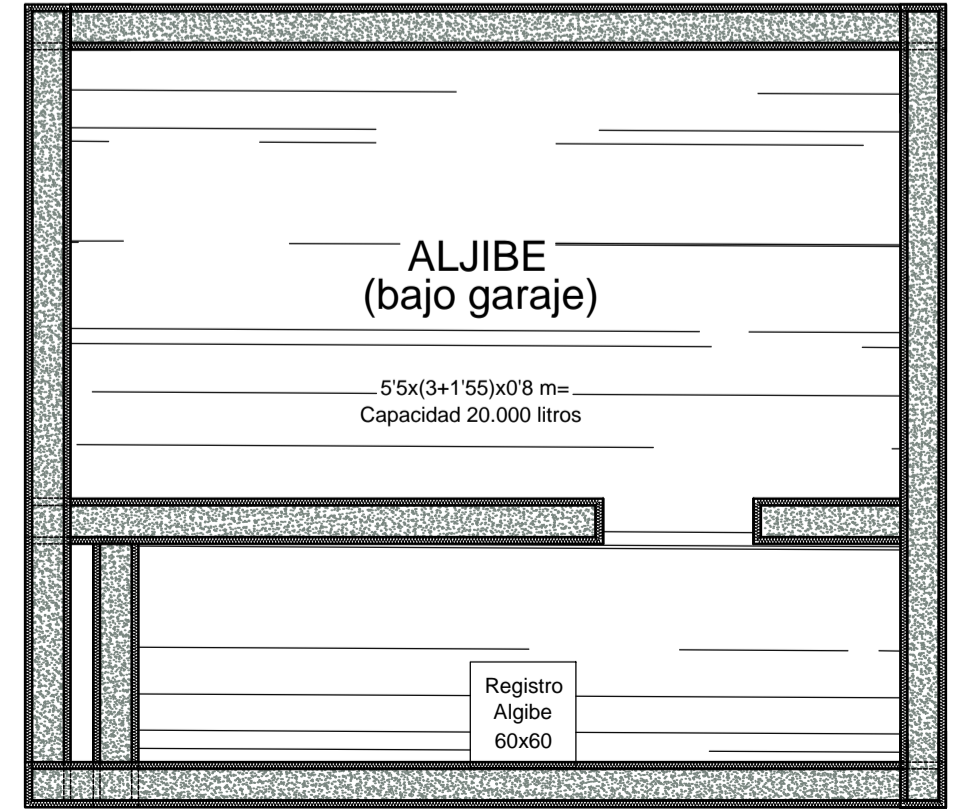
- 8 ÁRBOLES NUEVOS

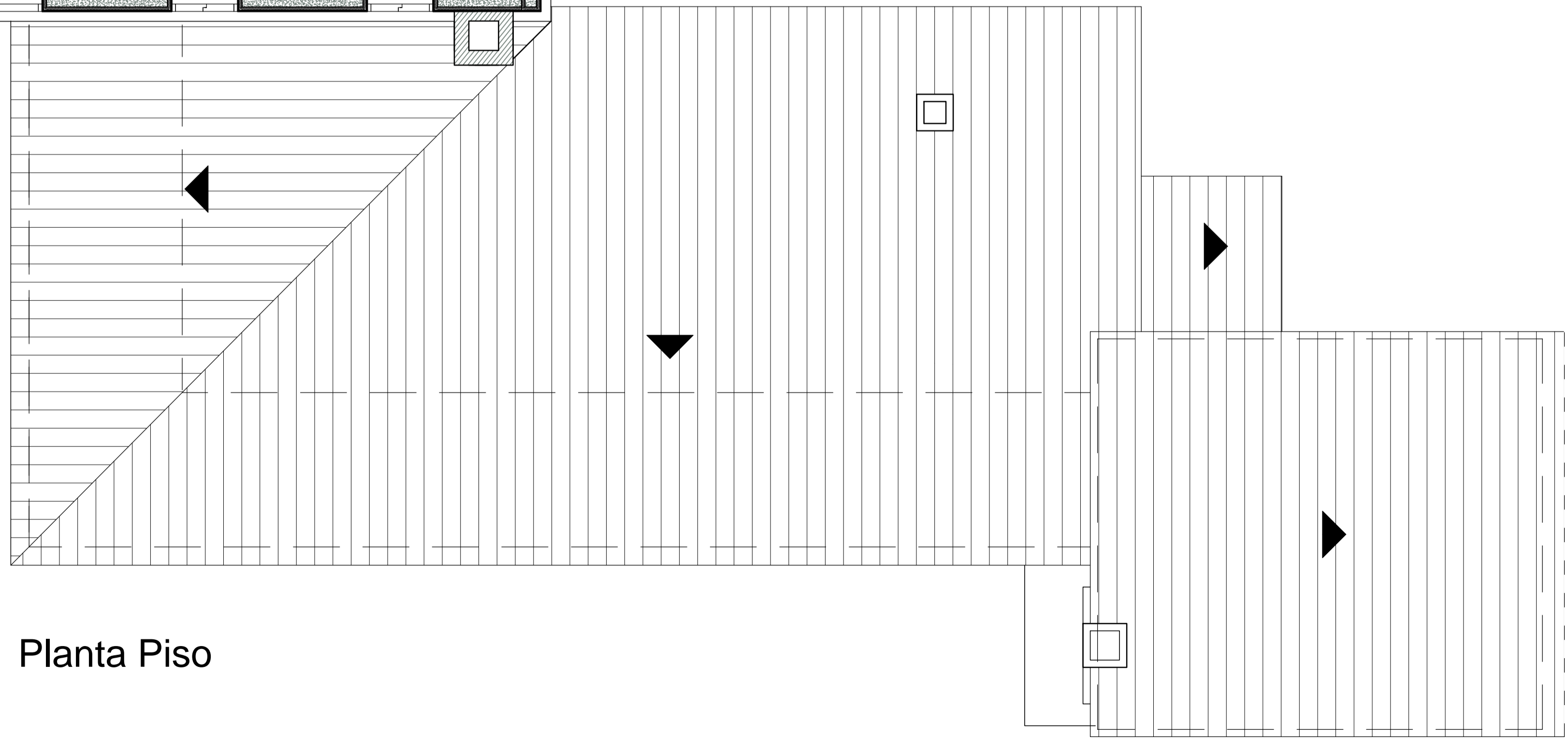
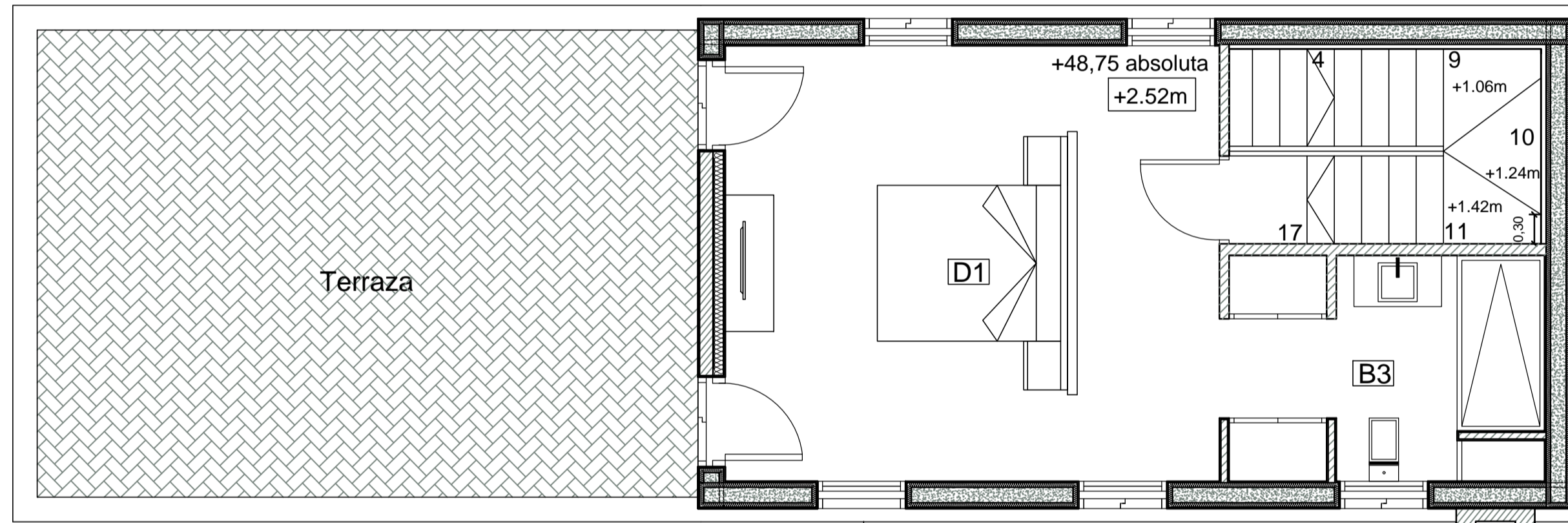
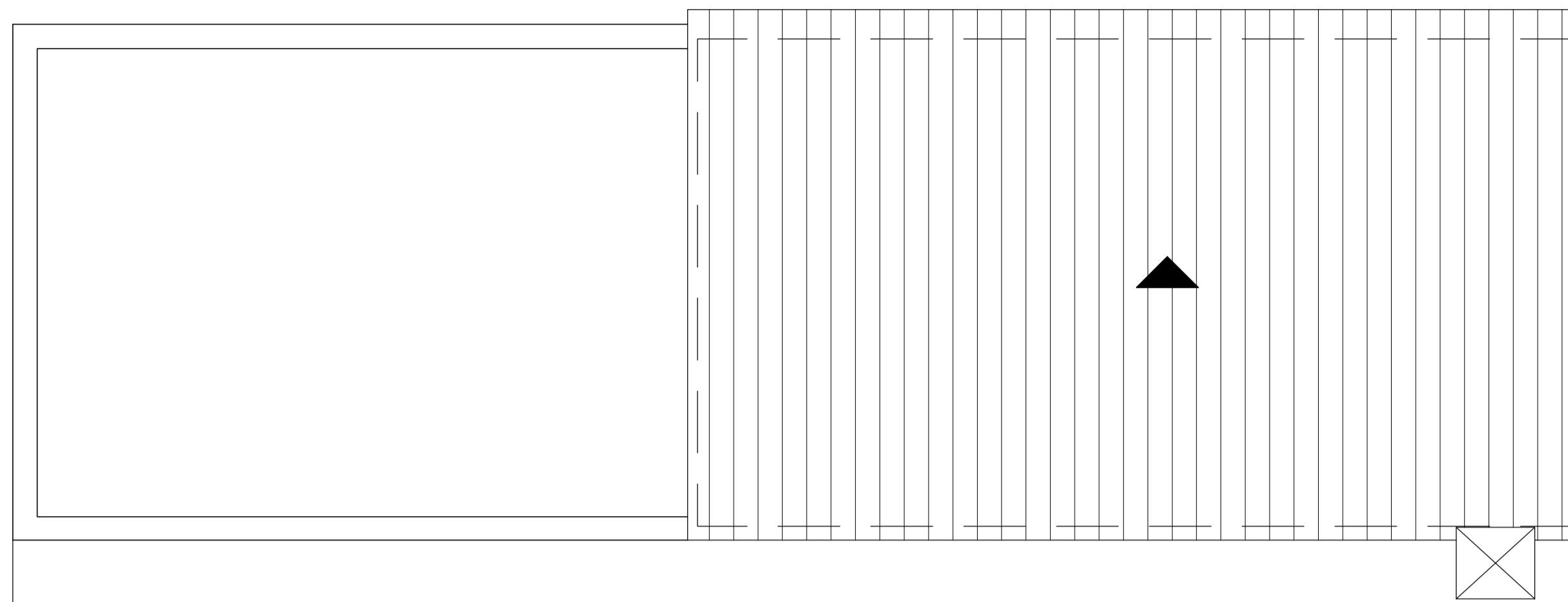
E: 1/500





Planta Baja





Planta Piso